



ProtoMat E34/E44

User manual

Publisher LPKF Laser & Electronics AG
Osteriede 7
30827 Garbsen
Germany
Phone: +49 5131-7095-0
Fax: +49 5131-7095-90
Email: info@lpkf.com

Date of issue 2016-03-07

Copyright © 2016 LPKF AG

This document and its contents in whole and in parts are subject to copyright. The reproduction, translation or duplication of the contents as photocopy or any digital form requires written permission of LPKF Laser & Electronics AG.

Translation of the German original document

General information

This document contains all information for the intended use of the system/product delivered. This document is intended for persons with basic knowledge of installation and operation of software-controlled systems. General knowledge of operational safety as well as basic knowledge of using PCs running Microsoft Windows® are required.

- ▶ Read this document and possibly associated safety data sheets carefully before first start-up and usage of the components.
- ▶ Observe the safety regulations as well as the regulations on operational health and safety and protection of the environment.
- ▶ Use the system/product only in a technically perfect condition.
- ▶ Observe all labels and safety signs on the system/product.
- ▶ Never remove the safety signs and replace or clean them if not readable anymore.
- ▶ Persons who install, operate, uninstall, or maintain our systems/products must not be under the influence of alcohol, other drugs, or medication that impairs the ability to react.
- ▶ Use only approved spare parts and accessories in order to prevent injuries due to unsuitable spare parts and accessories.
- ▶ Observe the technical data and ambient conditions specified in this document.

Validity

This document is part of the system/product and corresponds to the technical state at the time of publication. This document has always to be present at the system/product and has to be available to the operating personnel without restrictions, in a complete and legible form and at all times. If the operator changes, this document has to be handed over together with the system/product. The operator has to ensure that all safety measures specified in this document are observed.

The operating personnel must have read and understood this document before performing any task. A basic requirement for safe work is observance of all safety notes and steps. This document contains important information about the system/product that have to be observed when installing, first starting up, or maintaining the system/product. Its structure allows trained personnel to perform all tasks.


LPKF Laser & Electronics AG (abbreviated to **LPKF** in the following) reserves the right to make changes in respect to the content of this document. The figures in this document serve as basic understanding and can differ from the actual state of the system.

Structure of warning messages and safety notes

The safety notes and warning messages in this document identify hazards and risks and they are created in accordance with ANSI Z535.6-2011 and the standards series ISO 3864.

The warning messages are structured as follows:


- Warning sign (only for injuries)
- Signal word indicating the hazard class
- Type and source of the hazard
- Consequences of non-observance
- Measures to avoid the hazard


 + SIGNAL WORD
<p>Type and source of the hazard! Consequences of non-observance.</p> <ul style="list-style-type: none"> ▶ Measures to avoid the hazard. ▶ Further measure(s) to avoid the hazard.

Warning messages can also be embedded in the format of the surrounding text in order to avoid a *visual disruption* in a sequence. In this case, they are distinguished as follows:

- Type and source of the hazard!**
- ▶ **Measure(s) to avoid the hazard.**

Warning messages are classified in hazard classes represented by the signal word. In the following, the warning messages are described in accordance to their hazard classes:

 DANGER
<p>Type and source of the hazard! This warning message indicates a hazard of high risk that causes death or serious injury if not avoided.</p> <ul style="list-style-type: none"> ▶ Measure to avoid the hazard.

 WARNING
<p>Type and source of the hazard! This warning message indicates a hazard of medium risk that can cause death or serious injury if not avoided.</p> <ul style="list-style-type: none"> ▶ Measure to avoid the hazard.

CAUTION

Type and source of the hazard!

This warning message indicates a hazard of low risk that can cause minor or moderate injury if not avoided.

- ▶ Measure to avoid the hazard.

NOTICE

Type and source of the hazard!

This warning message indicates a hazard that can lead to possible property damage.

- ▶ Measure to avoid the hazard.

Text styles

Various text attributes, notations, and text structures facilitate reading the document. The text attributes (highlightings) inside this document are defined as follows:

Attribute	Function
<i>italic</i>	highlights elements of the user interface and of control elements of the system
bold	highlights important information and keyboard input
Courier New	highlights file paths
[]	highlights elements of buttons on software user interfaces
key	highlights keys of the keyboard

Tasks or procedures that are described in steps are compiled to sequences in this document. A sequence consists of at least three components: objective, step, and result.

Component	Description
■	Indication of an objective. The sequence starts here.
1. 2. 3.	Indication of a sorted list of steps. The specified order must be observed.
□	Indication of an intermediate result that is followed by further steps or the result.
☑	Indication of the result. The sequence is finished.
▶	Indication of a single step.

Additional information

The following symbols are used to indicate additional information:



This note indicates especially useful information.

**Advanced information**

This advanced information indicates special knowledge.

Registered Trademarks

Product and brand names are trademarks of LPKF Laser & Electronics AG, registered among others at the US Patent and Trademark Office: LPKF[®] and the company logo, # 2,385,062 and # 2,374,780; Solarquipment[®], # 3,494,986; ProConduct[®], # 3,219,251; Allegro[®], # 3,514,950.

Microsoft[®] and Windows[®] are brand names or registered trademarks of Microsoft Corporation in the USA and/or other countries. All other trademarks belong to the respective owner.

Limited liability

All data, notes and instructions in this document have been prepared with consideration to the statutory standards and regulations, the present state of technology, as well as our many years of knowledge and experience.

LPKF accepts no liability for damage due to:

- non-observance of this document
- improper use of the system/product
- employment of personnel that is not sufficiently qualified
- unauthorized modification
- technical changes
- unauthorized manipulation of the safety devices
- use of spare parts that are not approved by LPKF

The actual scope of delivery can deviate from the explanations and presentations given here, due to custom designs, the utilization of additional order options, or due to the most recent technical changes.

The responsibilities agreed in the delivery contract, the General Terms and Conditions as well as the delivery conditions of the manufacturer and the statutory regulations valid at the time of the conclusion of the contract are effective.

Warranty

Please note that the warranty is subject to the current regulations in combination with the current General Terms and Conditions.

All information and instructions in this document have been compiled in observance of current regulations and the current state of the art. Before working with the system/product, this document has to be read carefully. The manufacturer assumes no liability for damage and faults due to non-observance of this document.

LPKF Laser & Electronics AG provides a 12-months warranty if the following conditions are met:

- The warranty starts on delivery.
- The warranty covers defects in material or manufacture. During the warranty period, such defects are remedied without cost by replacement or rework of the defective parts. This service is provided by the LPKF Service.

For further information on wear parts refer to the chapter scope of delivery.

Customer service

For technical information contact our LPKF Service:

Address LPKF Laser & Electronics AG
Service & Support Rapid Prototyping
Osteriede 7
30827 Garbsen
Germany

Phone + 49 5131 7095-1333

Fax + 49 5131 7095-90

Email support.rp@lpkf.com

Internet www.lpkf.com

In our continuous effort to improve our documentation we are asking you to give us your feedback if you notice any discrepancy when working with the system/product, or if you have any comments or suggestions for improvement.

At the moment of packaging, the system/product has been equipped with the latest software version and with the software and hardware documentation currently valid. By now, new versions of the documentation as well as new software versions might be available.

For all the latest news and updates visit the support area of our homepage:
<http://www.lpkf.com/support>.

Contents

1	Safety	11
1.1	Intended use	11
1.2	Residual risks	12
1.3	Basic hazards	12
1.4	Responsibility of the operator	14
1.5	Personnel requirements	15
1.6	Personal protective equipment	16
1.7	Safety signs	17
1.8	Actions in case of an emergency	17
1.9	Environmental protection	18
2	Technical data	19
3	Structure and function	20
3.1	Brief description	20
3.2	Scope of delivery	20
3.3	Type label	22
3.4	System components	23
3.4.1	Total view	23
3.4.2	Processing head	23
3.4.3	Processing table	24
3.4.4	Vision system	24
3.5	Optional modules, accessories, extras	25
3.6	Connections	26
3.7	Displays and control elements	28
3.8	Software	29
3.9	Modes of operation	30
4	Transport and storage	31
4.1	Transport inspection	31
4.2	Transport	31
4.3	Storage	32
4.4	Packaging	32
4.4.1	Handling packaging material	32
4.4.2	Symbols on the packaging	33
5	First startup	34
5.1	Safety	34
5.2	Requirements of the place of installation	34
5.2.1	Climatic conditions	34
5.2.2	Minimum required space	35
5.2.3	Workplace of the operating personnel	36
5.2.4	Floor	36
5.2.5	Connections provided by the customer	36
5.3	Preparations	37
5.4	Connecting the system	37
6	Operating the system	42
6.1	Safety	42
6.2	Preparations for use	43
6.3	Typical production process	43
6.3.1	Switching on the system	43
6.3.2	Preparing the data	46
6.3.3	Processing the material	52
6.3.4	Switching off the system	59

6.4	Special tasks	60
7	Maintenance	67
7.1	Safety	67
7.2	Maintenance schedule	67
7.3	Maintenance tasks for the maintenance personnel of the operator	68
8	Troubleshooting	70
8.1	Fault display	70
8.2	Actions in case of an error	72
8.3	Fault table	72
9	Disassembly and disposal.....	74
9.1	Safety	74
9.2	Preparations.....	74
9.3	Uninstalling the system	74
9.4	Disposing of the system.....	75
10	Appendix	76
10.1	List of figures.....	76
10.2	List of tables.....	77
10.3	EC Declaration of conformity	78

This document describes two systems that resemble each other. ProtoMat E34 and ProtoMat E44 are identically constructed, differing only in a few characteristics. The following always describes **the system**. For comprehensibility and practicability of the instruction steps, it does not matter which of the two systems is described. The characteristics that serve for differentiation are marked clearly in this document.

1 Safety

This chapter provides an overview of all important safety aspects for protecting persons as well as for a safe and fault-free operation of the system/product. There are further warning messages in the sections of the individual lifecycle stages.

1.1 Intended use

The ProtoMat E34 has been specially designed for producing single-sided circuit board prototypes while the ProtoMat E44 has been designed for producing circuit board prototypes of up to four layers. Both systems can also be used to create signs and housing components.

The system is approved for the following processing procedures and materials:

Processing procedures

- Milling and drilling of single-sided and double-sided base material
- Milling and drilling of multi-layer material (**E44 only**)
- Milling of SMD solder paste stencils
- Engraving of signs or housing panels
- Drilling of plane materials

Materials

- GFRP and CFRP base material
- PTFE or ceramic-filled base material
- Plastics such as:
 - Polyoxymethylene
 - ABS copolymers
 - Necuron ®

Any other kind of usage is considered as not intended. The manufacturer is not liable for any damage resulting from this, the operator alone bears the risk. Part of the intended use is also to follow the instructions for safety, operation, and maintenance of the system that are described in this user manual.



In case of doubt contact the LPKF Service to receive more information on alternative materials or processing procedures.

- ▶ Only control the system with the system software that is included in the scope of delivery.

The system may only be operated with an extraction system that is sufficiently dimensioned and has an integrated HEPA filter.

- ▶ Only use qualified and approved extraction systems.



Contact the LPKF sales department or your local sales representative if you plan to use another extraction system.

Improper use

The system must not be used for processing highly combustible materials like e.g. paper or wood, sealed containers, hollow parts, textiles, or food.

Do not use the system with a different or modified software.

1.2 Residual risks

No residual risks have currently been identified, if the intended use as well as all safety regulations are observed. Non-observance can cause personal injuries and property damage.

1.3 Basic hazards

Always comply with the warning messages listed here and in the individual sections of this documentation to reduce the risks of injuries and property damage and to avoid dangerous situations.

Mechanical hazards

WARNING

Risk of injury by moving components!

Moving components can cause serious injuries e.g. crushing injuries or cuts.

- ▶ Never grasp moving components when the system is operating.
- ▶ Observe the follow-up time of the spindle. Before doing any work in the processing area or on the processing head, ensure that no component is still moving.

CAUTION

Tripping hazard by hoses and cables!

Hoses and cables are routed to the system. If the hoses and cables are laid inappropriately they pose a tripping hazard for the operating personnel.

- ▶ Always ensure that the hoses and cables do not pose a tripping hazard.

Electrical hazards

DANGER

Danger to life by electrical shock!

Touching energized parts causes a direct danger to life by electrical shock. Damage to the insulation or damaged individual parts can be dangerous to life.

- ▶ All work on energized components of the system must be performed by a qualified electrician.
- ▶ If the insulation is damaged, switch off the power supply immediately and initiate the repair.
- ▶ De-energize all energized components of the system or equipment, before working with them. Ensure that the system or equipment is de-energized for the whole time of the task.
- ▶ Never bridge or deactivate fuses.
- ▶ Always keep moisture away from energized parts because it can cause a short circuit.

Thermal hazards **CAUTION****Burn hazard by hot surfaces!**

During processing, some system components can heat up so much that direct contact can cause burns.

- ▶ Always wear your personal protective equipment.

Hazards by materials or substances **WARNING****Health hazard by faulty extraction!**

When processing materials, gases or dusts hazardous to health can be produced.

- ▶ Ensure that the extraction system is switched on and is working properly.
- ▶ Observe the maintenance intervals of the extraction system.
- ▶ Check the connection to the system regularly.

1.4 Responsibility of the operator

Operator

The operator is the person/company who operates the system/product themselves for industrial or commercial purposes, or makes it available to a third party for use and has the product responsibility for the safety of the system operator/user, the personnel in general, and other persons present.

Operator's obligations

The system/product is used in the industrial sector. The operator of the system/product is thus subject to the statutory obligations for occupational health and safety.

In addition to the safety instructions in this document, the safety, accident prevention, and environmental protection regulations must also be observed at the system's/product's place of operation.

The following applies in particular:

- The operator must inform himself about the effective industrial safety regulations and determine additional hazards in a risk assessment that result from the special working conditions at the system's/product's place of operation. The operator has to implement these in the form of operating procedures for the operation of the system/product.
- During the total operating life of the system/product, the operator has to check and ensure that the established operating procedures comply with the current state of the rules and standards and adapt them, if necessary.
- The operator has to define clear-cut responsibilities for installation, operation, trouble-shooting, maintenance, and cleaning.
- The operator has to make sure that all persons who are working with the system/product have read and understood this document. Furthermore, the personnel has to be trained and informed about the dangers on a regular basis.
- The operator has to provide the required personal protective equipment and instruct the personnel to wear it.
- The operator has to instruct the personnel to maintain a clean and tidy workplace. Eating and drinking at the workplace and especially while operating the system/product must not be permitted.

The operator is also responsible to keep the system/product in good working order. Thus, the following applies:

- The operator has to ensure that the maintenance intervals stated in this document are observed.
- The operator has to check all safety devices for proper function and completeness on a regular basis.

1.5 Personnel requirements

WARNING

Accident hazard due to insufficiently qualified personnel!

Insufficiently qualified personnel cannot assess the risks of using the system/product and put themselves and others in danger.

- ▶ Allow only qualified personnel to use the system/product.
- ▶ Keep insufficiently qualified personnel out of the working area.

The different tasks described in this document require different qualifications of the persons who are to perform these tasks.

If no personnel qualifications are listed in the individual chapters of this document, the operating personnel is intended to perform the tasks.

Only persons who can be expected to perform the tasks reliably are authorized to perform the tasks. Persons whose ability to react is impaired e.g. by drugs, alcohol, or medicine, are not authorized.

This document uses the following qualifications for persons for the different tasks.

Qualified electrician

A qualified electrician is able to perform work on electrical systems and to detect and avoid possible dangers on his/her own based on his/her professional training, know-how and experience as well as knowledge of the applicable standards and regulations.

The qualified electrician has been trained for the special field where he/she works and knows the relevant standards and regulations.

Maintenance personnel of the operator

Maintenance personnel are those persons who are designated by the operator to perform simple maintenance tasks (e.g. cleaning the system/product, removing parts from the system/product). The operator has to ensure that the personnel is suited for performing the work.

The maintenance personnel is able to perform his/her work and to detect and avoid possible dangers on his/her own based on his/her professional training, know-how and experience as well as knowledge of the applicable standards and regulations.

The maintenance personnel has been trained for the special field where he/she works and knows the relevant standards and regulations.

Service personnel

Service personnel are persons who are authorized by the manufacturer LPKF for servicing the system/product. These tasks may only be performed by the LPKF Service.

Operating personnel

Operating personnel trained by the operator is able to perform his/her work and to detect and avoid possible dangers on his/her own based on the training performed by the operator, his/her professional training, and his/her know-how and experience.

The operating personnel has been trained by the operator for the special field where he/she works and knows the relevant standards and regulations.

1.6 Personal protective equipment

Personal protective equipment protects against health or safety risks when working with the system.

The individual sections of this manual each point out the personal protective equipment (PPE) that has to be worn during the different tasks of working on the system.

Personal protective equipment

Depending on the application and the material to be processed, the operating personnel has to wear the required protective equipment, including:

- Safety shoes protection class 1
- Protective gloves
- Respirator mask
- Hearing protection (safety earmuffs or single-use earplugs)

Description of the personal protective equipment



Protective glasses with side shields

The protective glasses with side shields serve for eye protection in case of flying debris and liquid splashes.



Respirator mask

Respirator masks protect against hazards from harmful substances in gases, vapors, and particles.



Safety shoes

Safety shoes protect the feet against crushing injuries, falling objects and from slipping on slippery surfaces.



Protective gloves

Protective gloves protect the hands against friction, abrasions, puncture hazards and deep cuts as well as when touching hot surfaces.

1.7 Safety signs

This chapter lists the safety signs/pictograms that are applied to the system and describes their meaning.

WARNING

Risk of injury by nonobservance of safety signs!

The safety signs on the system instruct you on safe usage of the system. Nonobservance of the safety signs can cause severe injuries.

- ▶ Always observe the safety signs.
- ▶ Never remove the safety signs.
- ▶ If a safety sign is no longer legible, clean or replace the safety sign.

Safety signs at the housing



Safety isolation, Class III

The system is equipped with a safety isolation and uses a safety isolating transformer according to DIN VDE 0570-2-6 or EN 61558-2-6. As long as **the isolation is not damaged**, the voltage of live components that are accessible during operation presents no danger of electric shock.

1.8 Actions in case of an emergency

Preventive measures

- Always be prepared for fires and accidents!
- Keep first aid equipment (first aid kit, blankets etc.) and fire-fighting equipment functioning properly and close at hand.
- Instruct the personnel on incident reporting, first-aid equipment, and rescue equipment.
- Keep access routes clear for emergency vehicles.

Response to fire and accidents

- Immediately execute an emergency stop.
- Switch the main switch to 0 (OFF).
- Disconnect the supply of external components as quickly as possible.
- Recover persons from the danger zone if safe to do so.

1.9 Environmental protection

NOTICE

Environmental hazard by improper handling of substances!

Improper handling of environmentally hazardous substances, especially improper disposal, can cause considerable damage to the environment.

- ▶ Take appropriate measures immediately if environmentally hazardous substances are accidentally discharged into the environment. If you are in doubt, inform the appropriate local authorities about the damage and ask for appropriate measures that have to be taken.

The following environmentally hazardous substances are used:

Lubricants

Lubricants, such as greases and oils, contain toxic substances. They must not be released into the environment. They have to be disposed of by a waste management company.

Cleaning agents

Solvent-containing cleaning agents contain toxic substances. They must not be released into the environment. They have to be disposed of by a waste management company.

2 Technical data

Operating conditions

Data	Value	Unit
Temperature range (operation)	15 to 25	°C
Temperature range (storage, transport)	15 to 35	°C
Max. humidity, non-condensing	60	%
IP Code (IEC 60529) of the power supply unit	IP20	-
Service life	10	Years

Electrical data

Data	Value	Unit
Power supply	100 to 240	V
	50/60	Hz
Output power of the power supply unit	120	W

Mechanical data

Data	Value	Unit
Dimensions (width x height x depth)	370 x 300 x 450	mm
Weight (without packaging)	15	kg
Weight (with packaging)	20	kg

Process data

Data	Value	Unit
Rotation speed range	E34: up to 30 000 (variable) E44: up to 40 000 (variable)	min ⁻¹
Travel speed	100 (diagonally)	mm/s
Drilling performance	100 strokes	min ⁻¹
Collet	3.175 (1/8")	mm
Processing area with processing table (x/y/z)	229 x 305 x 5	mm
Resolution (x/y)	+/- 0.8 (0.04)	µm (mil)
Repeatability	+/- 5 (0.2)	µm (mil)
Accuracy using the reference-hole system	+/- 20 (0.8)	µm (mil)

Emissions

Data	Value	Unit
Sound pressure level LpA (EN ISO 3744)	< 70	dB (A)
Sound power level LwA (EN ISO 3744)	71 (without extraction system)	dB (A)
EMC emission class	A	-

3 Structure and function

This chapter describes the technical structure and the functions of the system.

3.1 Brief description

The system consists of three essential functional units:

- Processing table
- Processing head with:
 - Milling spindle
 - **E44**: additionally with camera
- xyz positioning system

3.2 Scope of delivery

This chapter provides an overview of the system's scope of delivery. For information on optional modules, accessories and extras refer to chapter Optional modules, accessories, extras on page 25.

- ProtoMat version **E34** or **E44**
- Power supply unit with:
 - Mains cable 230 V AC
 - Mains cable with US standard plug 115 V AC
- Drilling underlay plate
- Data medium Documentation
- Data medium CircuitPro PM
- Basic reference ProtoMat E34/E44
- Accessories bag ProtoMat E series containing:
 - 1 x Soft brush
 - 2 x Reference-hole strips 100 mm (red)
 - 1 x 19-mm-wide adhesive tape (roll of 10 m)
 - 2 x Reference-hole drills 1/8" shaft, 17 mm, d = 2.95 mm
 - 5 x Dowel pins 3m6x8 (ISO 8734)
 - 1 x Mains cable 125 V AC
 - 1 x USB cable
 - 1 x Press-fit tool (for dowel pins)
 - 1 x Extraction hose
 - 2 x Set screws with Torx drive and rounded head
 - 1 x Torx wrench T20
 - 1 x Collet brush 4 mm
 - 1 x Flanged bushing Ø12

Data medium Documentation

The data medium contains the following:

- User manual ProtoMat E34/E44
- Basic reference ProtoMat E34/E44
- User manual CircuitPro PM
- How-to guide CircuitPro PM

- Product catalog Rapid Prototyping
- Unpacking instructions

Data medium CircuitPro PM

The data medium contains the following:

- CircuitPro PM software
- User manual CircuitPro PM
- How-to guide CircuitPro PM

Accessories kit (order code: 127696)

The accessories kit contains the following:

Description	Quantity
Drilling underlay plate, 229 mm x 305 mm, d=2 mm (pre-drilled)	10
Base material FR4, 229 mm x 305 mm, 0/35 µm (pre-drilled)	10
Base material FR4, 229 mm x 305 mm, 35/35 µm (pre-drilled)	5
Special adhesive tape	1
Board cleaning pad	3
Tool kit - 1/8" shaft with spacer rings	1

Table 1: Accessories kit E34/E44

Wear parts

The following wear parts are excluded from the warranty:

- Bushing
- Set screw

3.3 Type label

The type label is located at the housing of the system. For information on identifying the system and the relevant equipment, specify the system model and the serial number on the type label when you contact the LPKF Service.

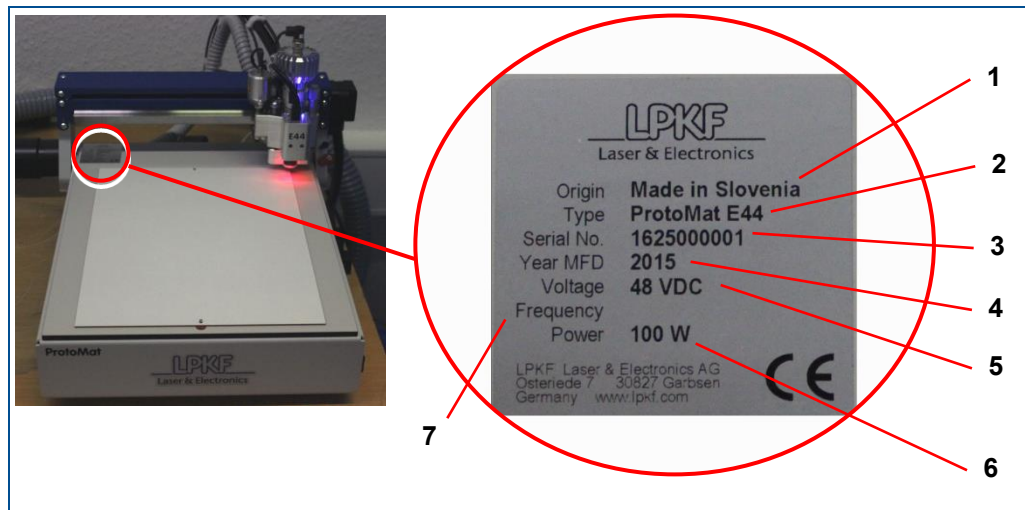


Fig. 1: Type label

- | | | | |
|---|---------------------|---|-------------------|
| 1 | Country of origin | 5 | Operating voltage |
| 2 | System type | 6 | Power rating |
| 3 | Serial number | 7 | Line frequency |
| 4 | Year of manufacture | | |

3.4 System components

This chapter describes the components of the system. First of all, make yourself familiar with the individual components of the system before starting the operation. Before operating the system, also inform yourself about the important software elements and the different operation modes.

3.4.1 Total view

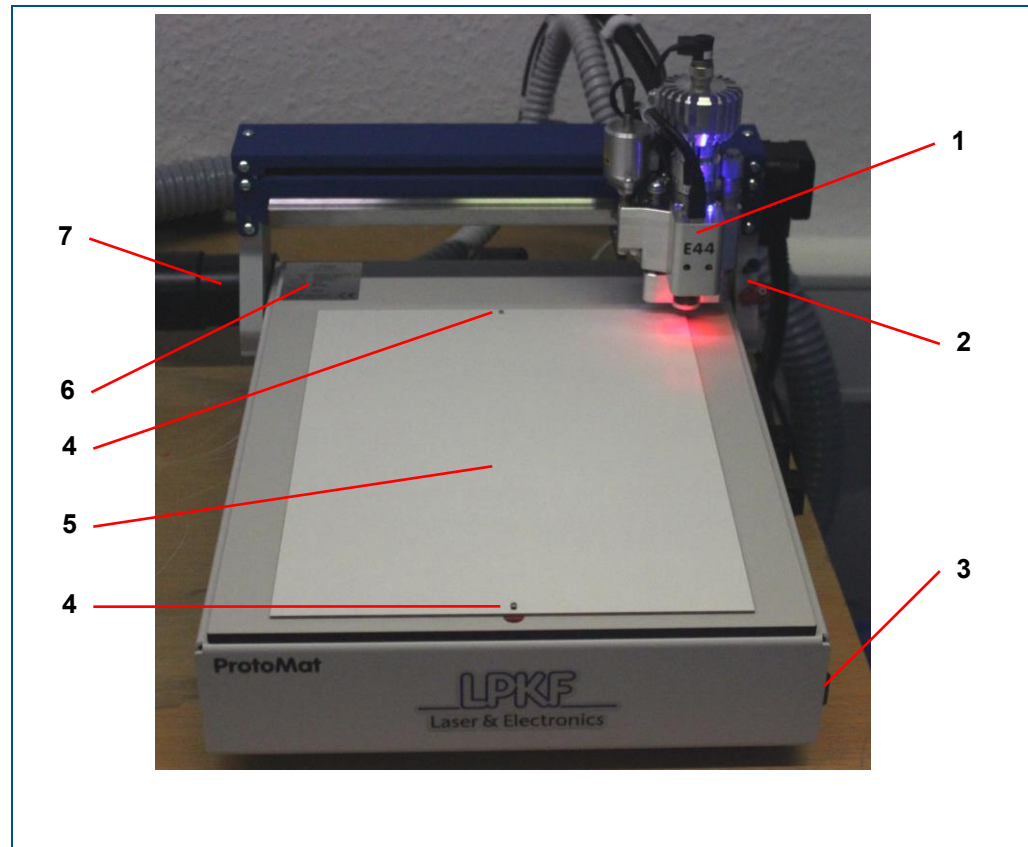


Fig. 2: System overview

- | | |
|-------------------------------------|--|
| 1 Processing head (E44 with camera) | 5 Processing table |
| 2 Screwdriver and insertion tool | 6 Type label |
| 3 On/Off switch | 7 Extraction fitting for the extraction system |
| 4 Dowel pin | |

3.4.2 Processing head

The processing head moves on the x and y axis above the processing table and processes the PCB with the inserted tool. The ProtoMat E44 additionally has a camera for recognizing the fiducials. The tools in the collet are exchanged manually by the operating personnel.

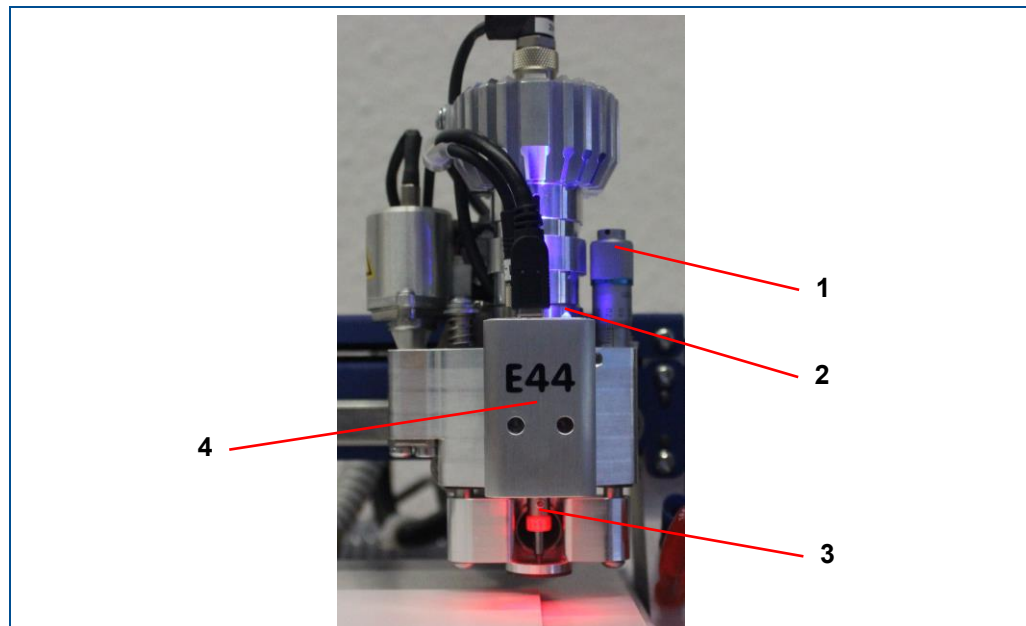


Fig. 3: Processing head

1 Milling-depth adjustment
2 Operation LED

3 Collet
4 Camera (E44 only)

3.4.3 Processing table

The material is placed and affixed on the processing table and is subsequently processed by the processing head. The processing table has a reference-hole system with two dowel pins on an exactly defined line. These enable to produce double-sided PCBs precisely, even without a camera. Match-up of the top and bottom layers is achieved by the dowel pins.

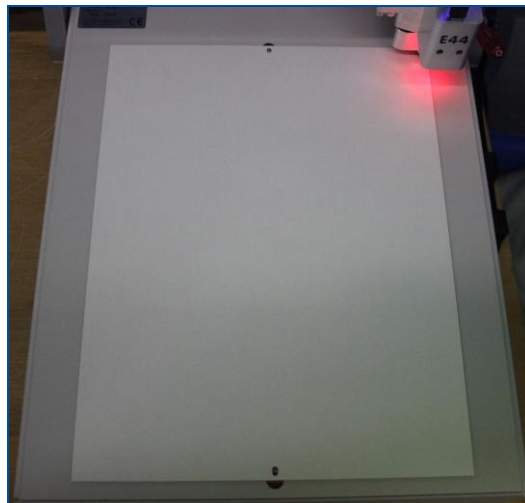


Fig. 4: Processing table

3.4.4 Vision system

The system can recognize the fiducials on the material with the camera and thus measure the material exactly. Furthermore, the camera can be used to check the milling width result and thus the milling width adjustment.

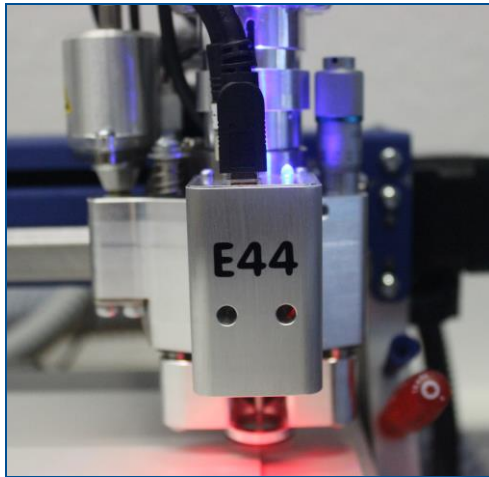


Fig. 5: Vision system

3.5 Optional modules, accessories, extras

The system can be equipped with the following accessories:

- Tools
- Extraction system with automatic On/Off function
- Measuring microscope with 100x magnification, metric scale, and lighting
- Precision ring kit (order code: 116698)



For more information contact the LPKF sales department or your local representative.

Extraction system

LPKF recommends using the **JetStream iSeries AX079-25** extraction system. For a detailed description of the extraction system refer to the manufacturer's manual delivered with the extraction system.

The extraction system that you use should have the following characteristics:

Characteristics	Data
Extraction air flow	at least 186 m ³ /h
Extraction fitting	Ø 50 mm
Separation efficiency	> 98% (≙ filter class: at least E12)

Table 2: Extraction system

- ▶ Use a HEPA filter of class 12.

⚠ CAUTION

Health hazard by insufficient filtration!

Filters cannot be cleaned or reused. If you are using saturated, defective or no filters at all, filtration of particles that can be harmful to health is not guaranteed.

- ▶ Only operate the system with installed and working filters.
- ▶ Observe the recommended maintenance intervals and replace the filters in time.
- ▶ Dispose of the saturated filters properly. Observe the local disposal regulations.

⚠ WARNING

Health hazard by gases or dusts!

Processing materials with laser beams can produce gases or dusts hazardous to health.

- ▶ Only process materials that are approved by LPKF.
- ▶ Always ensure that the extraction system is switched on and working properly.



If you are using other accessories, refer to the manufacturer's manual for more information.

All consumables and tools can be found in the product catalog. They can be ordered individually or in kits.

3.6 Connections

This chapter describes the connections of the system that are located on the rear.

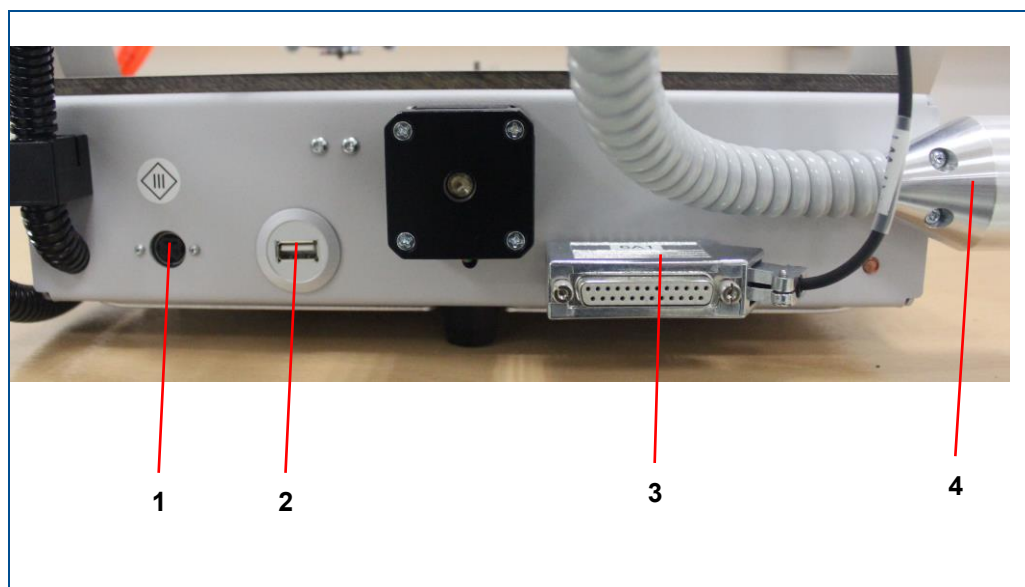


Fig. 6: Connections

- | | |
|--|--|
| <p>1 Socket, for connecting the mains cable</p> <p>2 USB 2.0 socket, type B, for connecting the system to the PC</p> | <p>3 25-pin D-sub connector for connecting the extraction system</p> <p>4 Extraction fitting for connecting to the extraction system</p> |
|--|--|

Pin assignment

The system is equipped with a 25-pole D-sub socket that provides remote control of the external extraction system. This interface is for connecting the control cable for the extraction system to transmit control signals and status signals with the system.

NOTICE

Property damage by a different extraction system!

Extraction systems that are not approved by LPKF can cause system damage.

- ▶ Use extraction systems that are approved by LPKF in order to guarantee a safe use of the system and to avoid damage.
- ▶ Only use the delivered connection cable.
- ▶ If there is any doubt, contact the LPKF Service for checking compatibility of a different extraction system.

Pin	Type	Name	Description
1, 2, 3, 8	Output		
4	Output	Extraction GO = 1	Extraction system control
5	Output	Vacuum GO = 1	
6	Output	Status Light GN	
7	Output	Status Light YE	
9, 11, 22	GND		
10, 12	Power supply	24 V DC	
13		Status Light RD	
14, 15	Input		
16	Input	Vacuum ON = 1	Status of the extraction system
17	Input	INV filter full = 1	Extraction filter full (contact closed if filter full)
18	Input	Vacuum GO = 1	
19	Input	Cover closed	
20	Input	Pressure OK = 0	
21	Input	Faststop not acknowledged = 1	
23, 25	Power supply	24 V DC	
24	GND		

Table 3: Pin assignment D-sub 25-pin

3.7 Displays and control elements

This chapter describes the displays and control elements of the system. First of all, make yourself familiar with the individual components of the system before starting the operation.

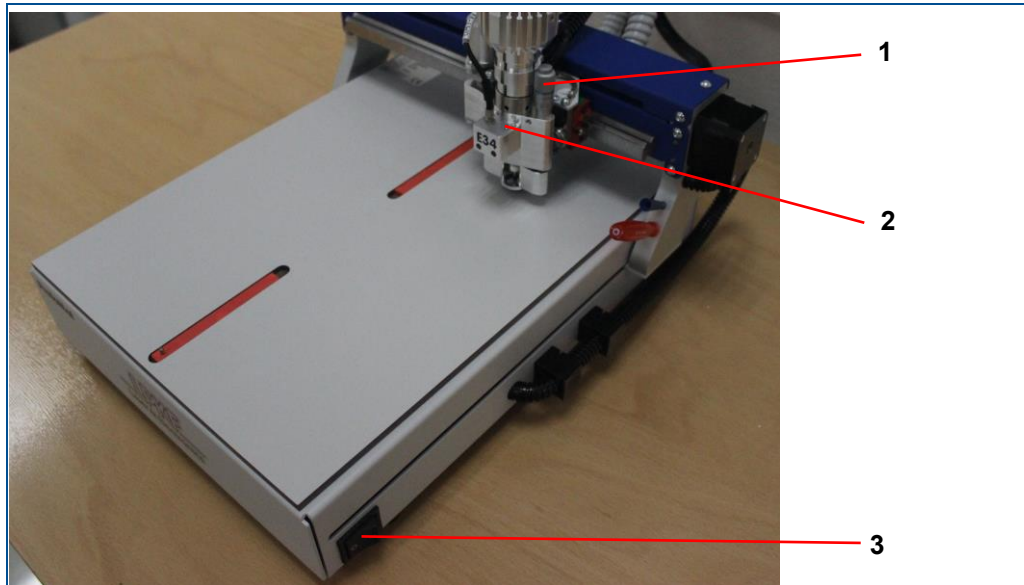


Fig. 7: Displays and control elements

- 1 Milling-depth adjustment
- 3 On/Off switch
- 2 Operation LED

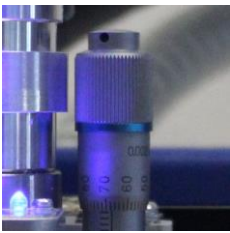
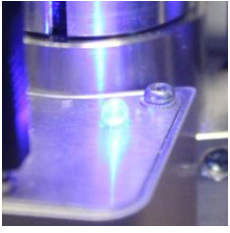

Figure	Description
	The milling-depth adjustment can be set with the micrometer screw (1), it defines the height of the processing head when milling the toolpaths.
	The operation LED (2) displays the operating state of the system. The following operating states are displayed at the signal light: Lit: The system is ready for operation or in operation. No fault exists. Not lit: The system is not ready for operation because it is switched off or a fault has occurred.
	The On/Off switch (3) switches the power supply on or off.

Table 4: Displays and control elements

3.8 Software

The system software CircuitPro PM is used for preparing and converting the PCB layout data into a compatible file format (e.g. the LMD format), for further editing the data, and for controlling the system.

The system software imports your CAD data, aperture tables, and tool lists. The design rule check checks the conductive track width and the conductive track spacing, and lists the inconsistencies in the *Message* pane. At the same time, these are displayed graphically in the CAM view. Thus, you can correct the data before starting the actual production process. Additionally, the software serves as automated control of the system and enables direct access to all operation parameters.



For a detailed description of the system software refer to the software manual.

The user manual and the software are included on the data medium in the delivery.

► Install the system software on the PC.

After the system software has been installed on your PC, the system has to be configured once with the associated equipment. The equipment configuration wizard helps you to set up the system.

Equipment configuration wizard



Fig. 8: Equipment configuration wizard

The *Equipment configuration wizard* starts automatically at the first start of **CircuitPro PM**. If the wizard does not start automatically, click on *Wizards > Equipment configuration wizard*.

For further information on the Equipment configuration wizard refer to the CircuitPro PM compendium.

3.9 Modes of operation

The system has two modes of operation:

- Production
- Service

The production mode is used for normal operation. The service mode is activated by entering a password in the software and is reserved for the LPKF Service.

4 Transport and storage

This chapter contains important information on transport, packaging and storage of the system.

NOTICE

System damage by improper transport!

Improper transport can cause damage to the system.

- ▶ Transport the system cautiously to the place of installation.
- ▶ Observe the symbols on the packages.
- ▶ Remove the packaging only directly before system installation.

4.1 Transport inspection

Check the delivered goods immediately upon receipt for completeness and for transport damage.

If transport damage is evident, proceed as follows:

- ▶ Do not accept the delivery or only with reservations.
- ▶ Record the extent of damage on the transport documentation or on the delivery note of the transport company.
- ▶ Initiate a complaint.

4.2 Transport

Prerequisites

- Safety shoes
- Protective gloves

Tools

- Unpacking instructions

■ Preparing the system for transport

1. Switch off the system before transport.
2. Disconnect all connections of the system (for an overview of the connections refer to page 26).



In case of the ProtoMat E44, the camera connections have to be disconnected additionally.

3. Insert a tool or the dummy tool if no tool is in the collet.
4. Install the transport lock beneath the processing head.
5. For transport over longer distances, pack the system in its original packaging.



For transport over short distances, the transport lock does not have to be installed and the system does not have to be packed.

- The system has been prepared for transport.

- ▶ Follow the unpacking instructions attached to the packaging.

■ Removing the transport lock

1. Remove the foam pad beneath the processing head.
 2. Store the foam pad in the box for a possible transport of the system.
- The transport lock has been removed.

4.3 Storage

- ▶ Store the system in its original packaging according to the symbols on the packaging.
- ▶ Store the packages under the following conditions:
 - Do not store outdoors.
 - Store dry and dust-free.
 - Do not expose to aggressive substances.
 - Protect against sunlight.
 - Storage temperature: 15 °C - 35 °C (59 °F - 95 °F)
 - Relative air humidity: 60 % max, non-condensing.
 - If storing for more than 3 months, check the general condition of all components and the packaging on a regular basis.

When putting the system out of operation and into storage over a longer period, ensure that the storage room is clean, almost dust-free, and has a sufficient loadbearing capacity.

4.4 Packaging

The packaging is chosen according to the transport conditions.

The packaging is to protect the system from transport damage, corrosion, and other kinds of damage until installation.

- ▶ Keep the packaging in its original form.
- ▶ Only remove the packaging just before installation.

4.4.1 Handling packaging material

- ▶ Dispose of the packaging material according to the current laws and local regulations.

NOTICE

Environmental hazard by wrong disposal of packaging!

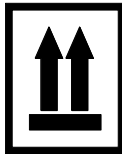
Wrong disposal of packaging material can cause environmental hazards.

- ▶ Dispose of the packaging material environmentally friendly.
- ▶ Observe the local disposal regulations and hire a specialized company for the disposal, if necessary.

The system may only be shipped in the original packaging of LPKF. Contact the LPKF Service if you need the packaging.

4.4.2 Symbols on the packaging

Observe the following symbols on the packaging when transporting the system:

**Top**

The arrowheads of the symbol indicate the top side of the package. These always have to point upwards, otherwise, the contents could be damaged.

**Keep dry**

Protect packages against moisture and keep them dry.

**Fragile**


Identifies packages with fragile or sensitive contents. Handle the package with care, do not drop, and do not subject it to shocks.


5 First startup

This chapter contains important information on first startup of the system.

5.1 Safety

Observe the following safety instructions for the first startup of the system:

 WARNING	
Accident hazard due to insufficiently qualified personnel!	
Insufficiently qualified personnel cannot assess the risks of using the system and put themselves and others in danger.	
<ul style="list-style-type: none"> ▶ Allow only qualified personnel to use the system. ▶ Keep insufficiently qualified personnel out of the working area. 	

 CAUTION	
Tripping hazard by hoses and cables!	
Hoses and cables are routed to the system. If the hoses and cables are laid inappropriately they pose a tripping hazard for the operating personnel.	
<ul style="list-style-type: none"> ▶ Always ensure that the hoses and cables do not pose a tripping hazard. 	

NOTICE	
Property damage by moisture during transport/storage!	
When transporting or storing the system, moisture can cause damage to the system.	
<ul style="list-style-type: none"> ▶ Ensure that there is no moisture in the system. ▶ Before first startup of the system wait approx. 24 hours to allow the system to acclimatize. 	

5.2 Requirements of the place of installation

Before installing the system, the following requirements of the place of installation have to be ensured.

5.2.1 Climatic conditions

The following climate conditions have to be ensured for operating the system:

Climatic conditions	
Temperature range	15 °C to 25 °C
Humidity	max. 60 % non-condensing

Table 5: Climatic conditions

5.2.2 Minimum required space

System dimensions

- Width 370 mm
- Depth 450 mm
- Height 300 mm

Minimum required space for operation and maintenance

- Width 1 800 mm
- Depth 1 100 mm
- Height 1 820 mm

The area marked in red in the following figure is the safety zone. It must not be blocked by objects. The area marked in blue is the workspace for maintenance and must not be blocked. In front of the system, at least 400 mm of space should be available for operation and movement.

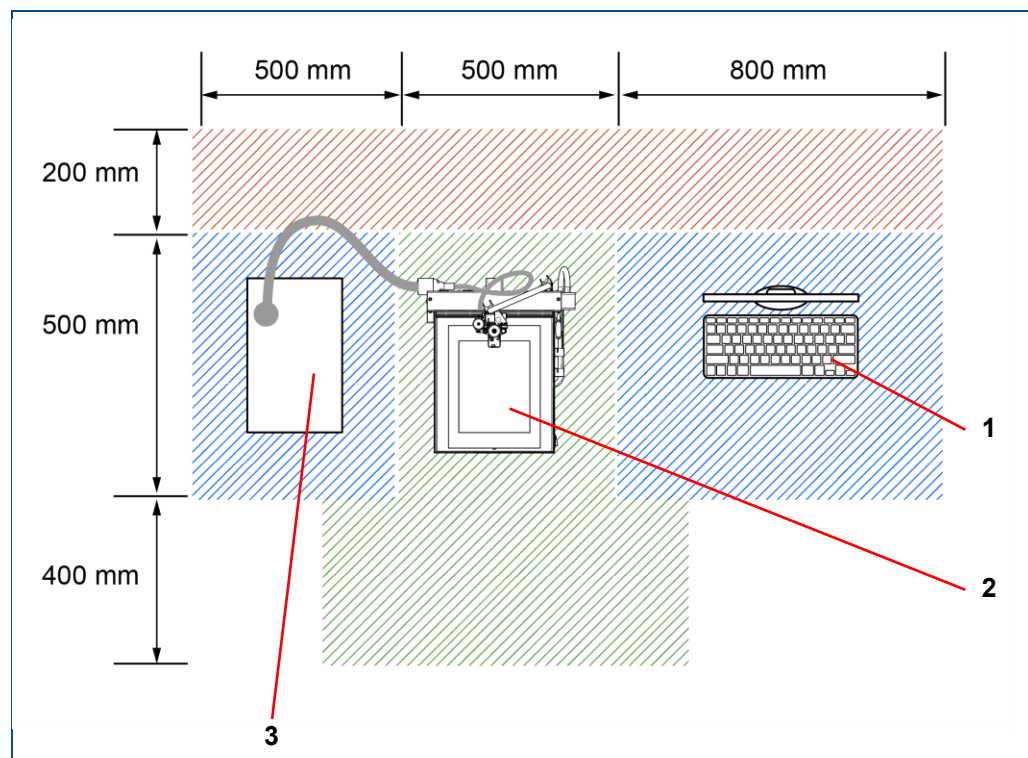


Fig. 9: Minimum required space

- | | |
|---|---------------------|
| 1 PC (recommended position for desk and PC) | 3 Extraction system |
| 2 System | |

5.2.3 Workplace of the operating personnel

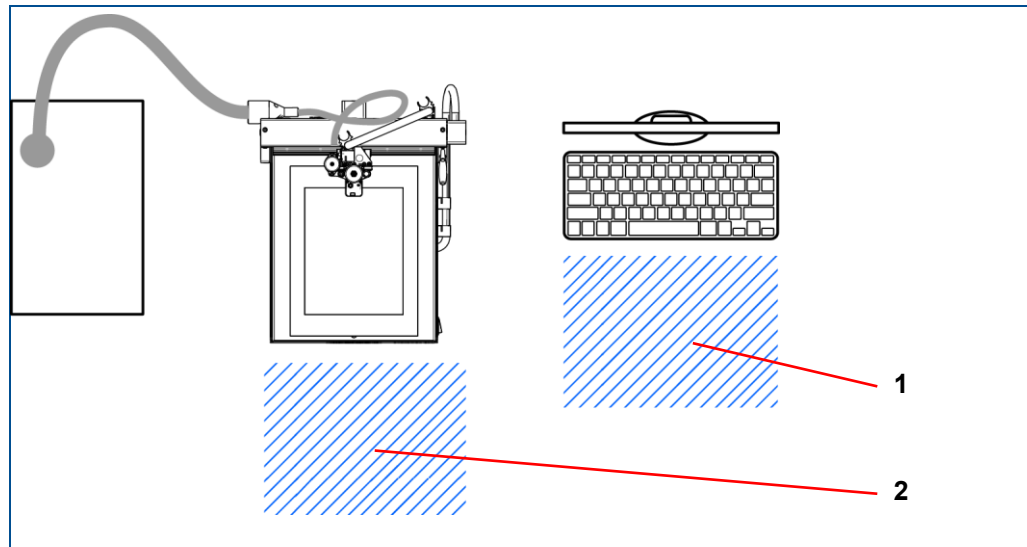


Fig. 10: Workplace of the operating personnel

1 System work station

2 PC work station

The system is designed exclusively for operation by a single person. The system is operated according to its intended use at the following work stations:

- **System work station**
The system work station is used for loading and unloading the system.
- **PC work station**
The PC work station is used for monitoring the production and for controlling the system.

5.2.4 Floor

The floor has to be leveled and antistatic and has to have a sufficient load-bearing capacity for the total weight of the system (**15 kg**).

⚠ WARNING

Risk of injury by loss of stability!
Loss of stability due to an improper floor or missing locks can cause uncontrollable movement or tipping of the system. This can cause serious injuries.

▶ Ensure that the floor has a sufficient load-bearing capacity for the system and is even.

5.2.5 Connections provided by the customer

The following connections must be available for first startup:

Electrical data

Data	Value	Unit
Power supply	110/230	V
	50/60	Hz

5.3 Preparations

Before the system is installed, you have to consider and ensure the following:

- A suitable extraction system has to be provided. LPKF recommends using the **JetStream iSeries AX079-25** extraction system. This is optionally available at LPKF.
- A PC has to be provided by the customer. For detailed information on system requirements refer to the user manual of CircuitPro PM.
- Provide sufficient space at the place of installation.
- Ensure tidiness and cleanliness at the place of installation.
- Provide the connection materials (hoses, tubes, cables etc.).
- The room has to be clean and almost dust-free.

5.4 Connecting the system

Once all preparations are concluded, the system is connected in the following order:

- Connecting the system with the extraction system
- Connecting the system with the PC via USB
- Connecting the camera to the USB port of the system (only **E44**)
- Connecting the system to the mains power supply
- Removing the dummy tool from the collet

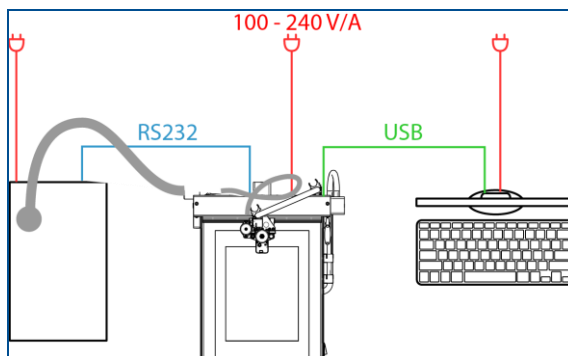


Fig. 11: Connecting the system

NOTICE

Property damage by improper startup of the extraction system!

Improper installation and startup can cause damage to the extraction system.

- ▶ Observe the minimum clearance around the extraction system defined by the manufacturer.
- ▶ Use only sockets with protective earth conductor for connecting.
- ▶ Do not use extension cables.
- ▶ Do not bend the extraction hose.
- ▶ Do not block the air flow.

■ Connecting the system with the extraction system

1. Check whether all required filters are installed. Install the filters if necessary.



For further information on filter maintenance refer to the manufacturer's manual.

2. Connect the hose of the extraction system to the extraction fitting of the system.



Fig. 12: Connecting the extraction system

3. Connect the hose to the air intake on the top of the extraction system.

The extraction hose has been connected.

4. Plug the mains cable of the extraction system into a wall socket.

The extraction system is connected to the mains power supply.

5. Plug the D-sub cable into the LPKF port.



Fig. 13: D-sub connector of the ProtoMat E34/E44

6. Plug the other end of the D-sub cable into the corresponding connector on the front of the extraction system.



Fig. 14: D-sub connector of the extraction system

The system is connected to the extraction system.



Using a USB hub and/or extension cables can cause transmission problems. Connect the system directly with the PC.

■ Connecting the system to the PC via a USB cable

1. Plug the USB cable that is included in the delivery into the USB socket of the system.



Fig. 15: USB socket

2. Connect the system's USB cable with a free USB port of your PC.

The system has been connected to the PC via a USB cable.

■ Connecting the system to the mains power supply

1. Plug the connector cable of the power supply unit into the power supply socket of the system.



Fig. 16: Power supply socket

2. Plug the mains cable of the power supply unit into a wall socket.

The system has been connected to the mains power supply.

■ Removing the dummy tool from the collet

1. Ensure that the system is switched off.
2. Pull the processing head by hand as far as possible to the front.

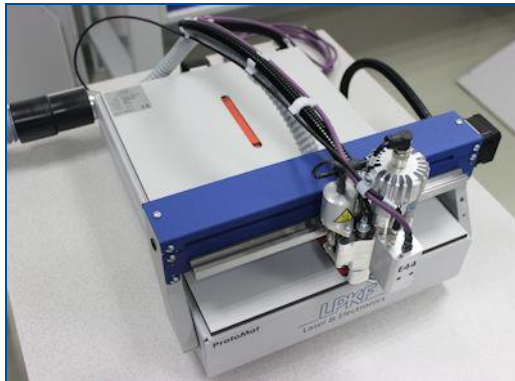


Fig. 17: Pulling the processing head to the front

3. Plug the insertion tool (2) onto the dummy tool in the collet (1).

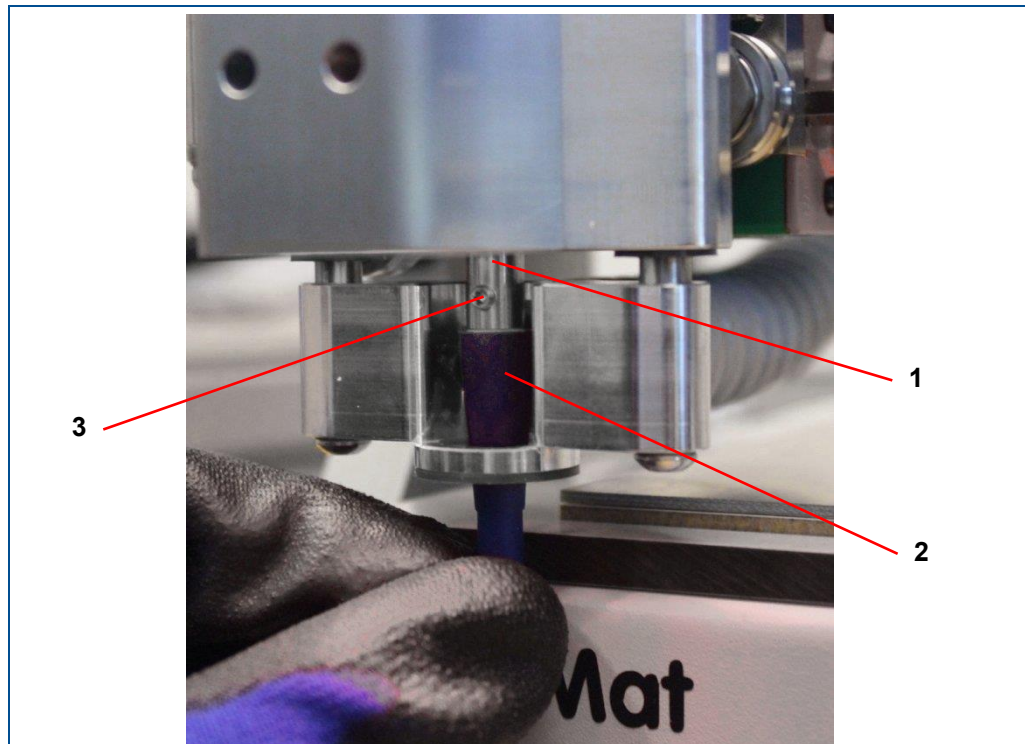


Fig. 18: Plugging the insertion tool onto the dummy tool

1 Collet

3 Locking screw

2 Insertion tool

4. Use the screwdriver in the delivery to loosen the locking screw (3) of the collet (1).



Fig. 19: Loosening the locking screw

5. Pull the insertion tool (2) with the dummy tool downwards out of the collet.



Fig. 20: Extracting the dummy tool

6. Remove the dummy tool from the insertion tool.



Fig. 21: Dummy tool

The dummy tool has been removed from the collet.

6 Operating the system

This chapter contains important information on operating the system and the associated software programs.



For detailed information on operating the software refer to the corresponding user manual.

6.1 Safety

DANGER

Danger to life by electrical shock!

Touching energized parts causes a direct danger to life by electrical shock. Damage to the insulation or damaged individual parts can be dangerous to life.

- ▶ All work on energized components of the system must be performed by a qualified electrician.
- ▶ If the insulation is damaged, switch off the power supply immediately and initiate the repair.
- ▶ De-energize all energized components of the system or equipment, before working with them. Ensure that the system or equipment is de-energized for the whole time of the task.
- ▶ Never bridge or deactivate fuses.
- ▶ Always keep moisture away from energized parts because it can cause a short circuit.

WARNING

Health hazard by faulty extraction!

When processing materials, gases or dusts hazardous to health can be produced.

- ▶ Ensure that the extraction system is switched on and is working properly.
- ▶ Observe the maintenance intervals of the extraction system.
- ▶ Check the connection to the system regularly.

WARNING

Risk of injury by moving components!

Moving components can cause serious injuries e.g. crushing injuries or cuts.

- ▶ Never grasp moving components when the system is operating.
- ▶ Observe the follow-up time of the spindle. Before doing any work in the processing area or on the processing head, ensure that no component is still moving.

NOTICE**Property damage by items in the processing area!**

When the system is switched on items in the processing area can cause property damage.

- ▶ Before switching on the system, always ensure that no items and no parts are in the processing area.

6.2 Preparations for use

Before working with the system check the following settings and conditions:

- The requirements of the place of installation (see page 34) have to be met.



If a cold system is brought into a warm surrounding, this can lead to condensation of humidity. Thus, the system that has been disconnected from the power supply should acclimatize for 24 hours before you connect it to the power supply again.

- Perform a visual check.
- The following components have to be connected to the system and have to be ready for operation:
 - PC (provided by customer)
 - Extraction system
 - Power supply



Operate the system on an over-current protection (230 V / 16 A / 110 V).

6.3 Typical production process

This chapter describes a typical production process. The following steps are performed:

- Switching on the system
- Preparing the data
- Processing the material
- Switching off the system

6.3.1 Switching on the system

The system is switched on as follows:

- Switching on the system and the components
- Starting CircuitPro PM
- Connecting the PC to the system manually (if necessary)

■ Switching on the system and the components

1. Start the PC.
 2. Start the extraction system.
 3. Switch the On/Off switch of the system to position I.
- The system and the components have been switched on.

■ Starting CircuitPro PM

1. Click on the desktop link or on *Start > (All) Programs > LPKF Laser & Electronics > CircuitPro PM*.
- The following dialog is displayed:

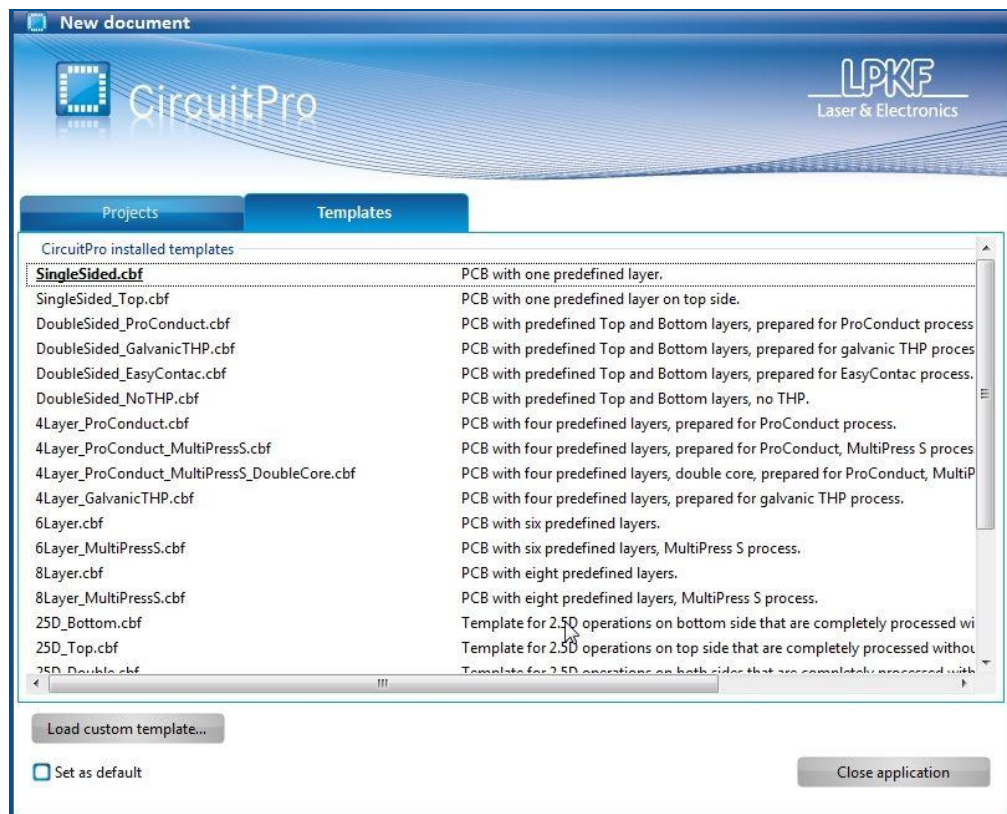


Fig. 22: Dialog *New document*

2. Select a compatible template in the tab *Templates* or an existing project in the tab *Projects*.

- The dialog is closed and the user interface changes as follows:

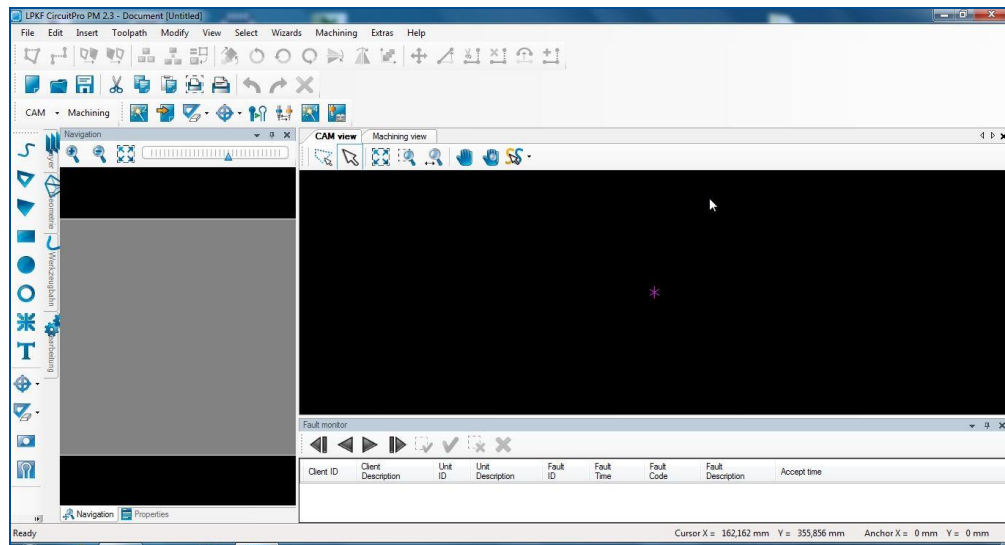


Fig. 23: User interface CircuitPro PM

- CircuitPro PM has been started.



The connection between the PC and the system is established automatically when the system software is started. If the system is not recognized, connect the system manually to the PC.

■ Connecting the PC to the system manually (if necessary)

1. Click on *Machining > Connect...*
- The following message is displayed:

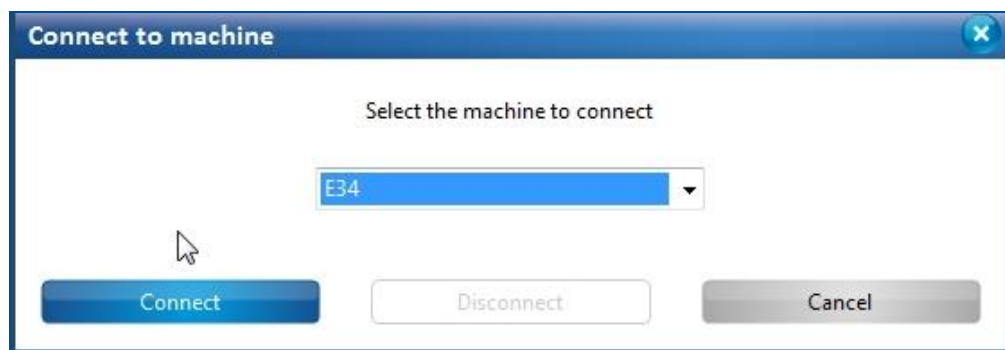


Fig. 24: Selecting the machine type

2. Click on the drop-down list *Machine type* and select the connected system (E34 or E44).
3. Click on [Connect].

- The connection to the system is established. The individual connection steps are displayed in the following message:

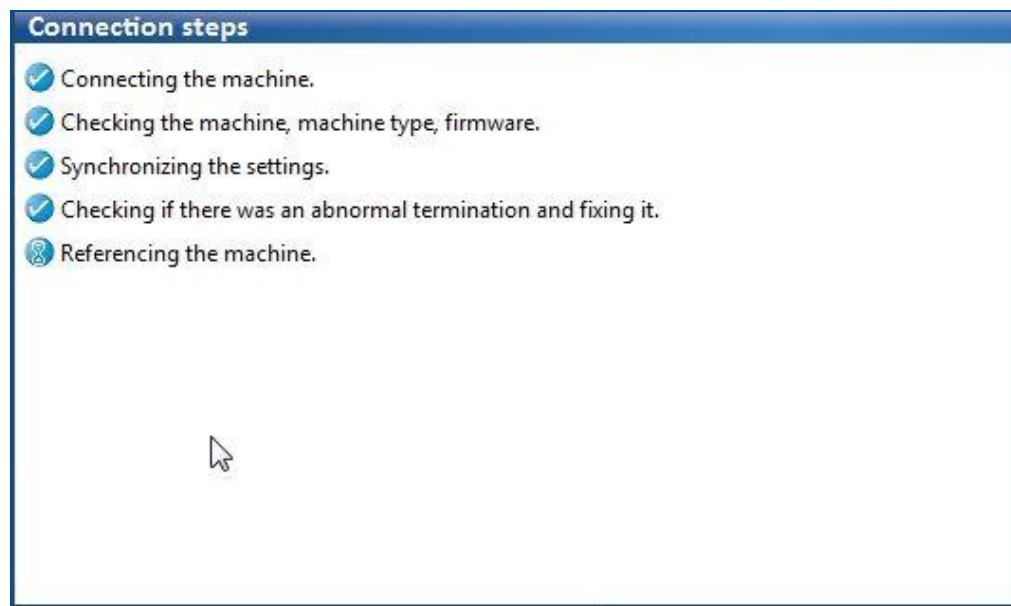


Fig. 25: Connection steps

- Once the system has been recognized and its data have been transmitted, the user interface of CircuitPro PM is displayed.
- The PC has been connected to the system.

6.3.2 Preparing the data

This chapter describes how to import the layout data and how to prepare them for production. This is done by executing the following steps:

- Importing the data
- Creating fiducials
- Generating toolpaths
- Creating rubout areas

■ Importing the data

1. Click on *File > Import*.
- The following dialog is displayed:

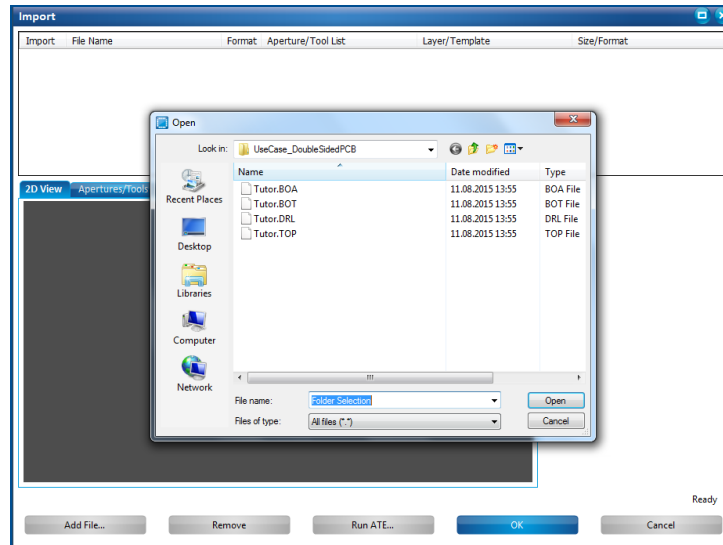


Fig. 26: Importing the data

2. Navigate to the following folder:

Win XP: C:\Programs\LPKF Laser & Electronics\LPKF CircuitPro PM 2.3\Example Data\UseCase_DoubleSidedPCB

Win 7: C:\Program Files (x86)\LPKF Laser & Electronics\LPKF CircuitPro PM 2.3\Example Data\UseCase_DoubleSidedPCB

Win 8 (also 8.1): C:\Program Files (x86)\LPKF Laser & Electronics\LPKF CircuitPro PM 2.3\Example Data\UseCase_DoubleSidedPCB

3. Select the files Tutor.TOP and Tutor.BOA.
4. Click on [Open].

- The CAM view changes as follows:

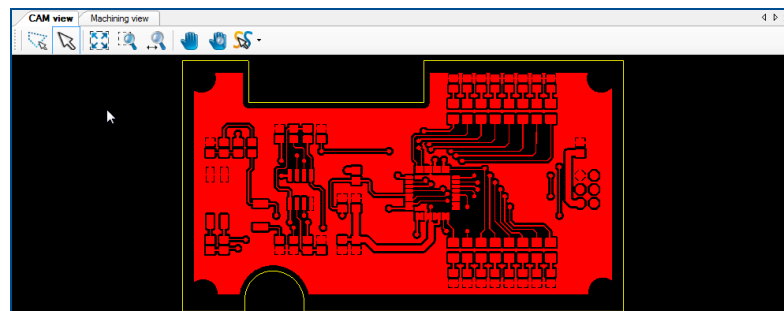


Fig. 27: CAM view with opened project

- The data have been imported.

■ Creating fiducials

Fiducials are created in the *Fiducial* layer and are drilled into the material during the phase *DrillFiducial*. They have a defined diameter of 1.5 mm. All drilled holes are recognized by the system's camera.



It is recommended to create four fiducials. If you use only two fiducials, arrange them diagonally.

1. Click on *Insert > Fiducials > Fiducial*.
2. The following dialog is displayed:

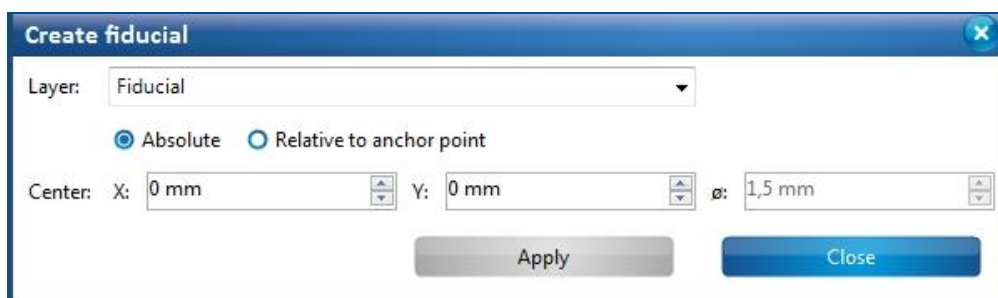


Fig. 28: Create fiducial

3. Click on the positions in the CAM view where you want to place the fiducials.
or:
Create the fiducials by entering the x and y position in the dialog.
- The view changes as follows:

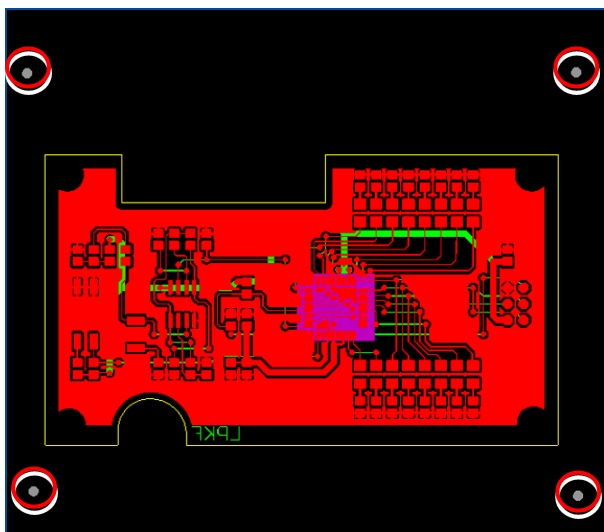


Fig. 29: Four fiducials

4. Click on [Close].
- The fiducials have been created.

■ Generating toolpaths

Before a circuit board can be produced, toolpaths have to be generated from the imported data.

The system software helps you creating toolpaths with the *Technology dialog*.

1. Click on *Toolpath > Technology dialog...*

□ The following dialog is displayed:

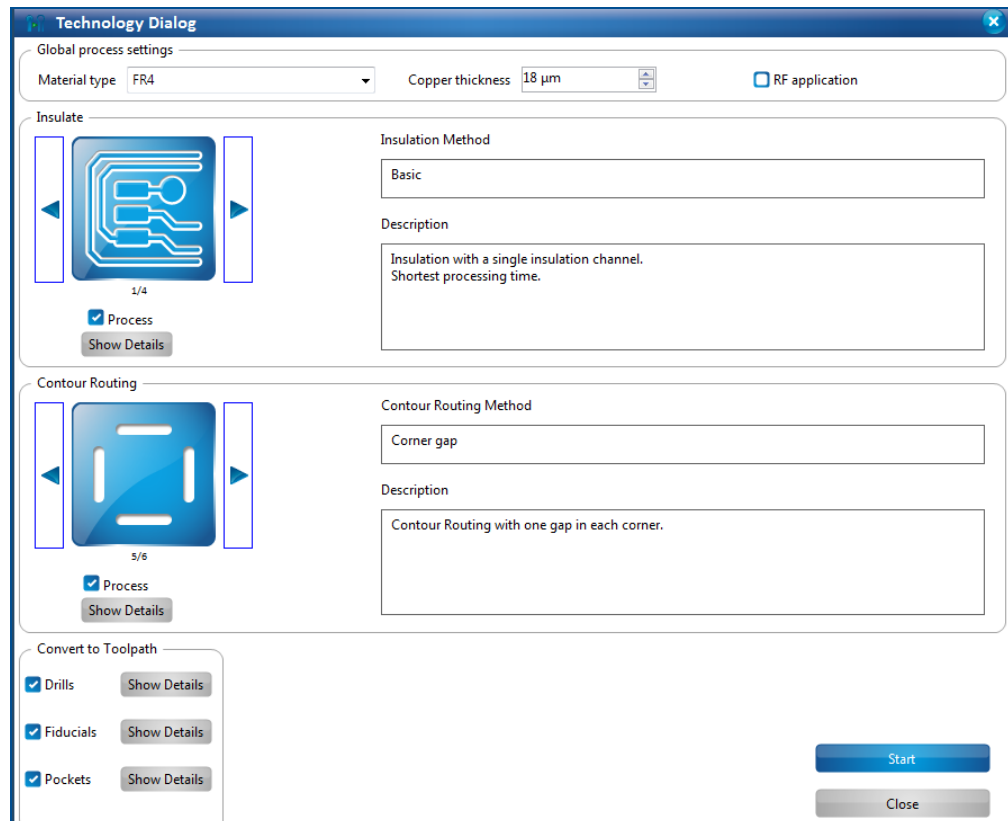


Fig. 30: Technology Dialog

You can change the settings of the toolpath generation in the technology dialog by clicking on *Show details*. You can define which tools are available so that only these are taken into account for toolpath generation.



For detailed information on general operation and the individual features of the *Technology dialog* refer to the user manual of CircuitPro PM.

2. Click on the right arrow button in the group *Insulate* until the *Insulation Method Partial rubout* is displayed.
 3. Deactivate the function *Pockets* by clicking on the corresponding check mark.
 4. Click on [Start].
- The computation results and the tools required for the project are displayed.
5. Check whether all tools are available.

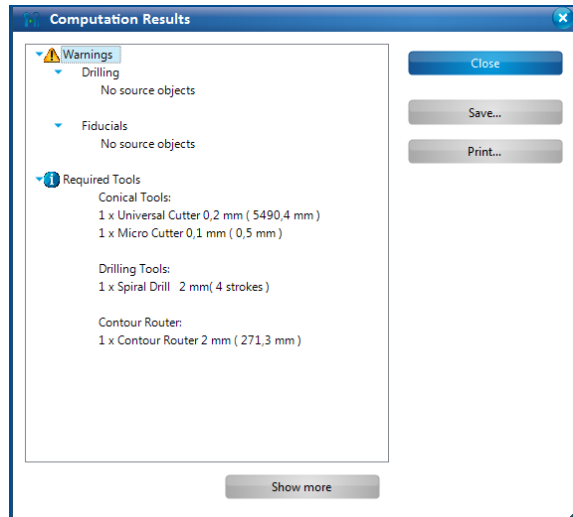


Fig. 31: Computation results



The warning message indicates that source data are missing for some computation functions. This is not an error but a notice for the user.



Advanced information

The computation results of CircuitPro PM recommend which tools should be used for processing the generated toolpaths. If a tool is not available, you can assign another tool to the generated toolpath afterwards in the pane *Toolpath*.

Please note that using tools with different diameters can cause results that differ from the computed data.

You can also deactivate tools that are not available in the *Technology dialog* using *Show details* so that these are not used for toolpath generation.

6. Click on [Close].
- The dialog with the computation results is closed.
- The toolpaths have been generated.

Rubout areas enable to produce an especially precise insulation in defined areas. The residual copper is partially or completely removed depending on the insulation method.

A rubout area is created on the Top layer of the current layout around the pads of the IC.

■ Creating rubout areas

1. Click on *Insert > Rubout area > RuboutTop*.
- The following dialog is displayed:

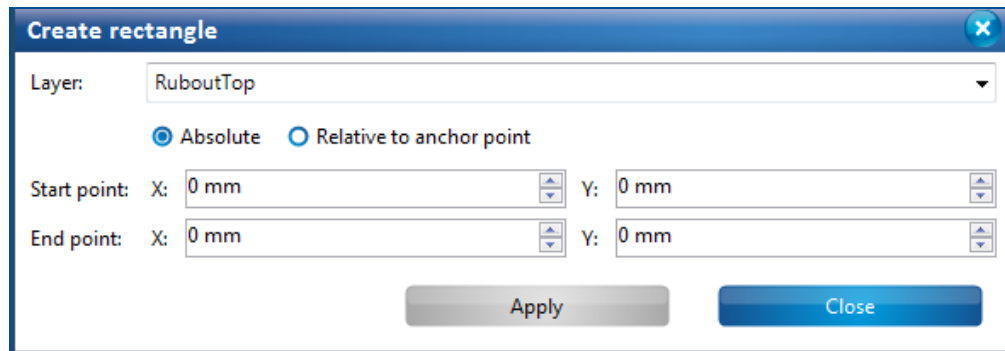


Fig. 32: Create rectangle to create a rubout area

2. Draw a rectangle around the IC's pads of the layout or enter the coordinates of the corners in *Start point* and *End point*:

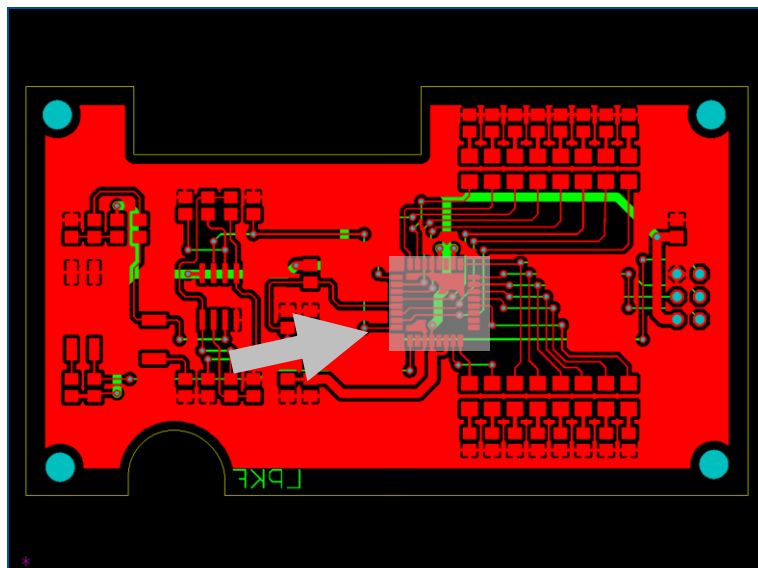


Fig. 33: Rectangle surrounding the IC pads



It can be helpful to hide other layers to draw the rubout area depending on which layer the rubout area is to be created.

The presentation of the objects on the individual layers can be defined in the pane *Layers*.

3. Click on [Close].
- The rubout area has been created.

6.3.3 Processing the material

This chapter describes how the material is processed based on the prepared data. This is done by executing the following steps:

- Placing and fastening the material on the processing table
- Starting processing
- Defining the material settings
- Placing the layout
- Drilling fiducials (E44 only)
- Processing the material (Bottom side)
- Turning the material over
- Searching fiducials (E44 only)
- Processing the material (Top side)

WARNING

Health hazard by gases or dusts!

Processing materials with laser beams can produce gases or dusts hazardous to health.

- ▶ Only process materials that are approved by LPKF.
- ▶ Always ensure that the extraction system is switched on and working properly.

CAUTION

Burn hazard by hot surfaces!

During processing, some system components can heat up so much that direct contact can cause burns.

- ▶ Always wear your personal protective equipment.

CAUTION

Risk of injury by sharp edges and points!

Improper handling of the tools used can cause cuts and puncture wounds.

- ▶ Always use the delivered insertion tool.
- ▶ Always store the tools in the tool box.
- ▶ Never touch the processing head during operation.

■ Placing and fastening the material on the processing table

Before any processing procedure is started, a drilling underlay plate and the material have to be placed and fastened onto the processing table.

NOTICE

Property damage by incorrect material thickness!

The system could be damaged if the entered material thickness does not match the actual material thickness.

- ▶ Only one drilling underlay plate at a time may be placed on the processing table.
- ▶ Make sure that the entered material thickness is the actual material thickness. Measure the actual thickness with a caliper gauge if necessary.

1. Ensure that the processing table is clean.

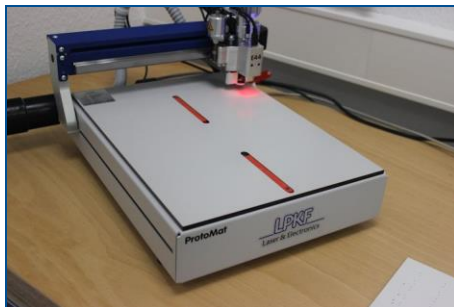


Fig. 34: Processing table

2. Place the drilling underlay plate on the processing table in such a way that the dowel pins fit into the register holes.



Fig. 35: Processing table with drilling underlay plate

3. Place the material to be processed on the drilling underlay plate in such a way that the dowel pins fit into the register holes.

NOTICE

Damage by wrongly inserted dowel pins!

The processing head can damage the dowel pins in case of contact.

- ▶ Ensure that the dowel pins do not protrude from the material to be processed.

4. Fasten the material to be processed along its edges with the adhesive tape included in the delivery.

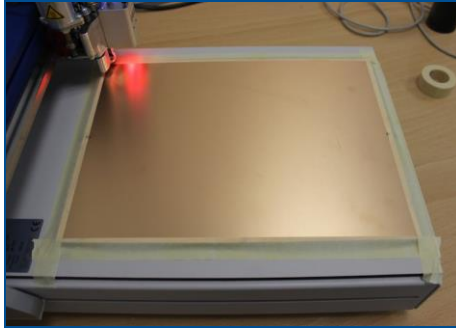


Fig. 36: Fastening the material



The adhesive tape must be fully removable. Use the provided adhesive tape or an equivalent adhesive tape.

- The material is fastened onto the processing table.

Starting processing

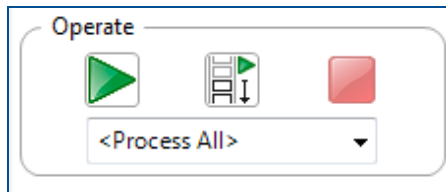



Fig. 37: Operate


1. Click on *Machining* > *Process all*.

Ensure that the value *Process all* is selected in the group *Operate* so that all phases are processed.

2. Click on .

- The phase *MountMaterial* is started.
- The processing is started.



Instead of processing all phases automatically, individual phases can be processed as well. To do this, select the phase that you want to start with and click on .



Process planning wizard

CircuitPro PM facilitates setting the parameters via the **Process planning wizard**. For detailed information on using the Process planning wizard refer to the CircuitPro PM compendium.

Once you have started processing, the system processes the job in different phases. These phases are displayed as messages.

Depending on the system used, the displayed messages and phases can differ from the following. Follow the instructions on your screen. From time to time, you are prompted to exchange the tool in the collet.

■ Defining the material settings

1. Mount the material onto the processing table if not already done. For more information on mounting and fastening the material refer to page 53.
 2. Click on [OK].
- The phase *MaterialSettings* is started.

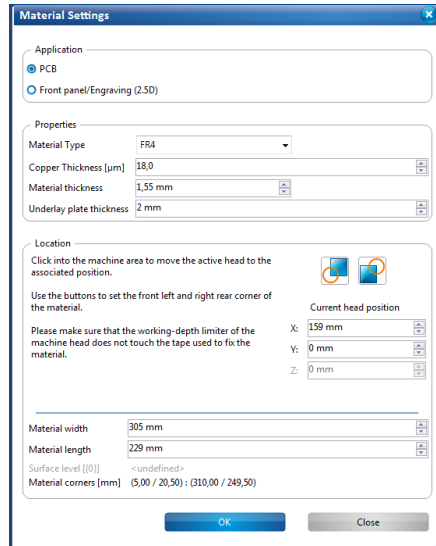


Fig. 38: Material settings

3. Enter the correct values for the material used in the dialog *Material settings*.
In the group *Application*, the material *PCB* is selected as default.
4. Edit the values for the copper layer thickness and material thickness if necessary.
5. For defining the material area, move the dialog *Material settings* to the side.
6. In the *Machining view* click on the position of the screen that represents the right rear corner of your material:

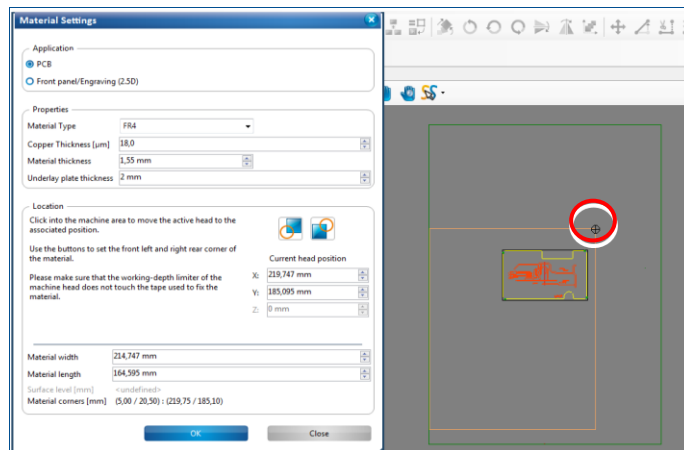



Fig. 39: Defining the right rear corner

- The processing head moves to the right rear corner.
7. Click on the button  in the dialog *Material settings*.
- The material area is adapted.
8. Click on the position of the screen that represents the front left corner of your material:

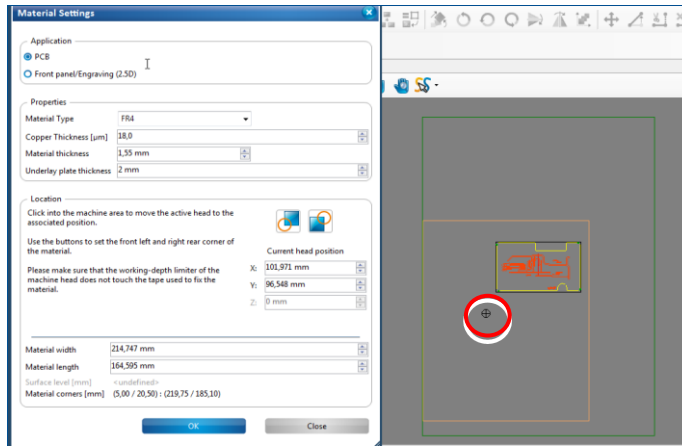



Fig. 40: Defining the front left corner

- The processing head moves to the front left corner.
- 9. Click on the button  in the dialog *Material settings*.
- The material area is adapted to the material.
- 10. Click on [OK].
- The phase *Placement* is started.
- The material settings have been defined.

The layout can be copied and placed freely on the base material for economic usage of the PCB material depending on the size of the layout and the size of the base material.

■ Placing the layout

1. Enter the values for the desired position into the fields *dX* and *dY*. You can also move the toolpaths in the machining view using the mouse.

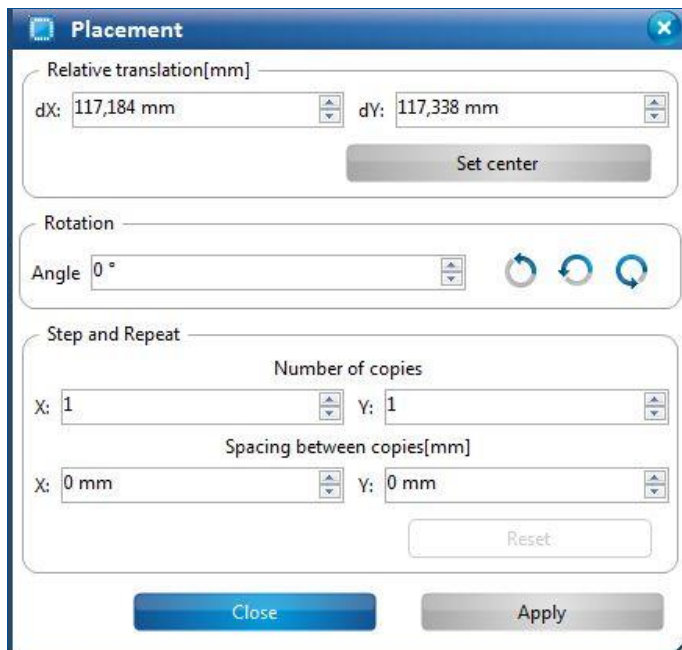


Fig. 41: Placement



You can repeat the toolpaths in x and y direction by changing the values in the group *Step and Repeat*.

2. Enter the value **2** in the field Y under *Number of copies*.
3. Enter the value **0 mm** in the field X under *Spacing between copies*.
4. Enter the value **5 mm** in the field Y under *Spacing between copies*.



The field *Spacing between copies* automatically displays the value for the layout width. The desired spacing between the layouts has to be added.

5. Click on [Apply].
- The layout is copied in y direction.
6. Click on [Continue].
- The phase *DrillFiducial* is started.
- The layout has been placed.

Optical markings on the PCB surface – also called fiducials – are needed for aligning the top and bottom sides exactly to each other. They are drilled into the material in this phase.



Using fiducials requires a camera system for optical fiducial recognition. This is included in the E44 as standard equipment. For further information contact the LPKF Service.

■ Drilling fiducials (E44 only)

1. Insert the **Spiral Drill 1.5 mm** into the collet.
2. Click on [OK].
If the spindle motor has not run yet, a 2-minute warm-up phase is started.
- The phase *Marking Drills* is started.
- The fiducials have been drilled.

■ Processing the material (Bottom side)

1. Insert the **Universal Cutter** into the collet.
2. Click on [OK].
- The phase *Drilling Unplated* is started.
3. Insert the tool that is displayed.
4. Click on [OK].
This phase may require several drilling tools corresponding to the drill diameters.
- The phase *Milling Bottom* is started.
5. Insert the tool that is displayed.
6. Click on [OK].
- The phase *Flip Material* is started.
- The material (Bottom side) has been processed.

■ Turning the material over

1. Remove the adhesive tape.
 2. Lift the material.
 3. Turn the material over along the y axis.
 4. Fasten the material with adhesive tape.
 5. Click on [OK].
- The machining view changes. The orientation of the layout is adapted to the orientation of the material. The side of the material to be processed is now the top side.
 - The material has been turned over.

If no camera is available for processing the phase *Read Fiducials_Top*, the Top side is aligned to the Bottom side via the reference-hole system. The phase *Read Fiducials_Top* is not processed.

E44 only

If the fiducial search is started for the first time since the start of the program, the camera auto-focuses initially five times. The camera automatically moves to the positions of the fiducials and recognizes them.

If the material is placed approximately at the same position as before, the fiducials should be found automatically and their positions should be stored. The Top side has thus been aligned to the Bottom side.

The following dialog is displayed, if the fiducials are not found automatically:

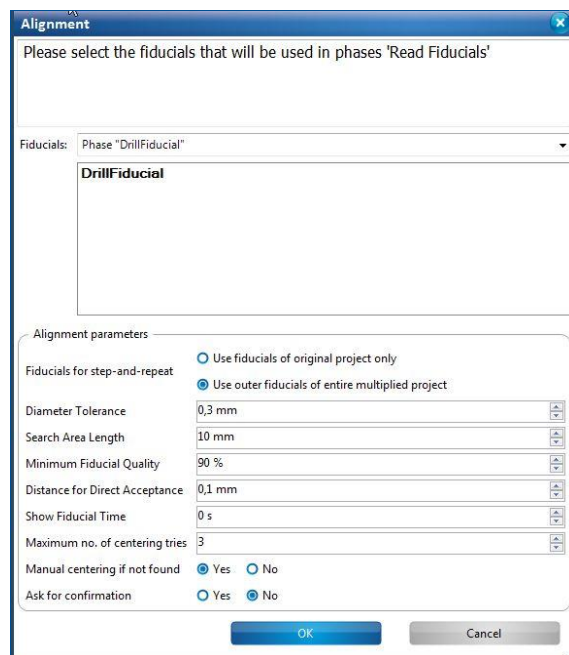


Fig. 42: Alignment

■ Searching fiducials (E44 only)

1. Enlarge the search area by increasing the value in the field *Search area length*.
 2. Start the search again by clicking on [OK].
 3. Repeat steps one and two if necessary.
- The phase *Milling Top* is started.
 - The fiducials are searched.



Enlarging the search spiral also increases the time required for searching the fiducials. So ensure that the material is placed at the same position if possible when turning it over (if this is not predefined by using the reference-hole system).

■ Processing the material (Top side)

1. Insert the tool that is displayed.
 2. Click on [OK].
- The phase *Contour Routing* is started.
 - 3. Insert the tool that is displayed.
 - 4. Click on [OK].
 - A message informs you that the production of the printed circuit board is finished.
 - The material (Top side) has been processed.



After the printed circuit board has been structured, solder resist and legend can be applied. LPKF offers the systems ProMask and ProLegend for these purposes. Furthermore, systems for applying solder paste, for assembly, and for soldering the printed circuit board are available.

6.3.4 Switching off the system

The system is switched off as follows:

■ Switching off the system

1. Close CircuitPro PM.
 2. Use the *On/Off switch* to switch off the system.
 3. Press the *Power* button to switch off the extraction system.
- The system has been switched off.

6.4 Special tasks

This chapter describes rarely used tasks that may facilitate working with your system. The following steps are performed:

■ Adjusting the milling depth

1. Affix the material to be processed onto the processing table as describe on page 53.

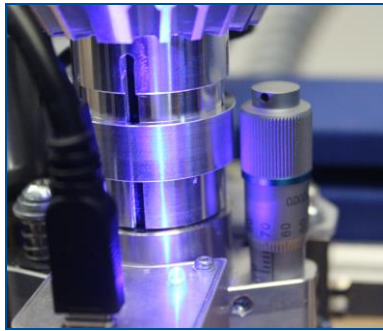


Fig. 43: Micrometer screw at the processing head

2. Adjust the desired milling depth with the micrometer screw.
3. Mill a test line.
4. Check the result with a measuring microscope.

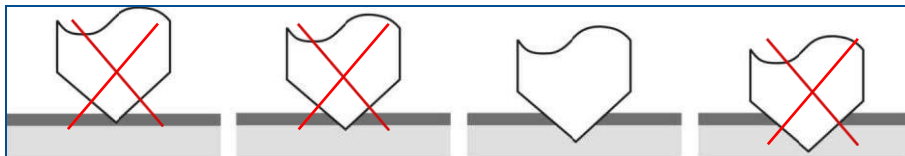


Fig. 44: Optimum milling depth

5. Repeat the procedure if necessary until sufficient material has been removed.
- The milling depth has been adjusted.

■ Drilling reference holes

1. Remove any material and the drilling underlay plate from the processing table.
2. Insert a screwdriver into one of the recesses next to the reference-hole strip.



Fig. 45: Inserting a screwdriver

3. Pry the reference-hole strip from the recess.

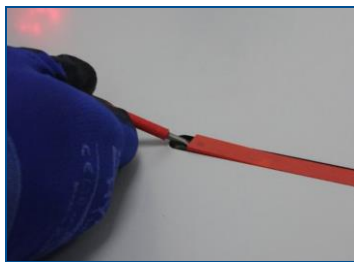


Fig. 46: Removing the reference-hole strip

4. Remove the other reference-hole strip (see steps 1 to 3).
- The reference-hole strips have been removed.

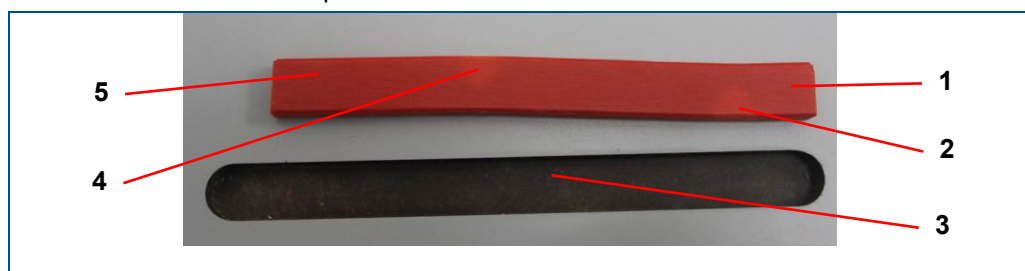


Fig. 47: Reference-hole strip

- | | |
|----------------------------------|------------|
| 1 Short end | 4 Mark |
| 2 Mark | 5 Long end |
| 3 Recess in the processing table | |



The reference-hole strip has a slightly curved shape with two marks. Depending on the distance from each end to the first mark, the strip has a short (1) and a long end (5). The short end (1) should be inserted into the recess (3) first.

5. Insert a new reference-hole strip into the first recess (3).

Push the reference-hole strip within the recess towards the edge of the processing table as far as possible.



Fig. 48: Inserting the reference-hole strip

6. Insert the second reference-hole strip into the empty recess.



The following instructions require that CircuitPro PM has been started and connected to the system. For more information on starting the system refer to page 44.

7. Click on *Machining > Drill reference holes*.

The dialog *Drill reference holes* is displayed:

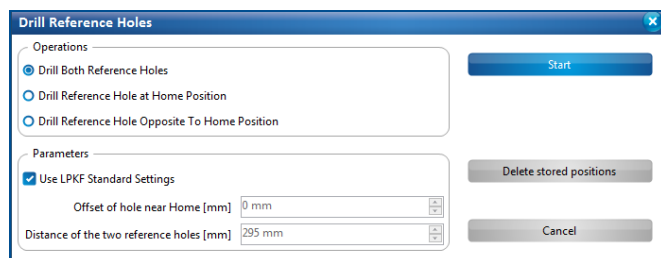


Fig. 49: Dialog *Drill reference holes*

8. Activate the function *Drill both reference holes*.

9. Activate *Use LPKF standard settings*.

10. Confirm by clicking on [Start].

11. If not already done, insert the reference hole drill (\varnothing 2.95 mm) into the collet.

For more information on inserting a tool refer to page 65.

12. Confirm by clicking on [OK].



Fig. 50: Reference-hole drill

The first reference hole is drilled.

13. Wait until the processing head moves to the front and the following message is displayed:

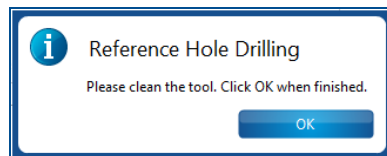


Fig. 51: Prompt for cleaning the tool

14. Clean the tool with a soft brush.



Fig. 52: Cleaning the tool

15. Confirm by clicking on [OK].
- The second reference hole is drilled.
16. Clean the tool with a soft brush.
17. Confirm by clicking on [OK].
- The reference holes have been drilled.

■ Inserting the dowel pins

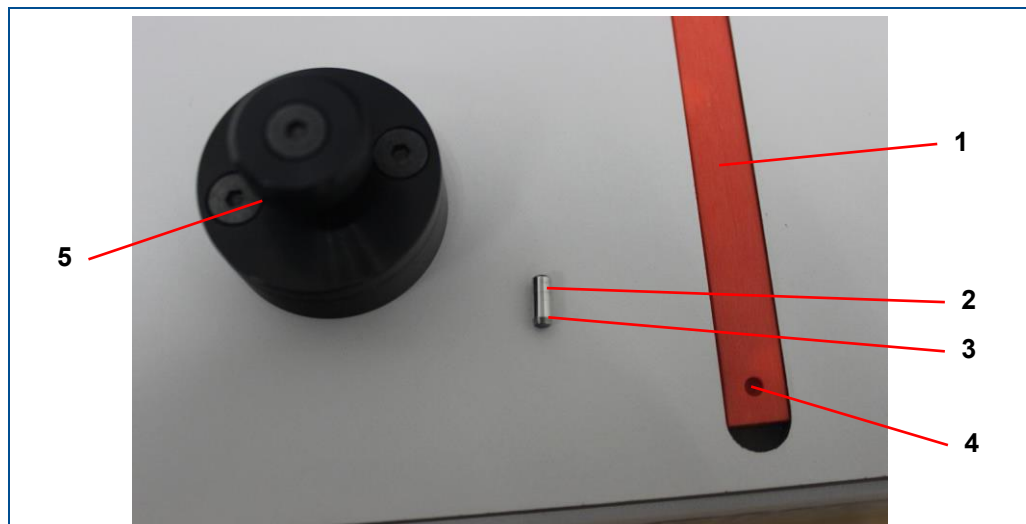


Fig. 53: Dowel pin and insertion tool

- | | | | |
|---|----------------------|---|----------------|
| 1 | Reference-hole strip | 4 | Reference hole |
| 2 | Dowel pin | 5 | Insertion tool |
| 3 | Conical end | | |

1. Insert the first dowel pin into the insertion tool with the wide end first so that the conical end protrudes slightly from the insertion tool.

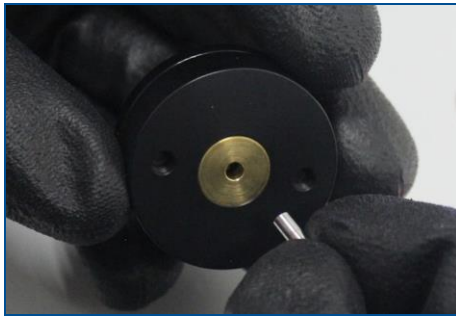


Fig. 54: Inserting the dowel pin

2. Place the insertion tool over the first reference hole.
3. Hold the insertion tool fast with one hand.
4. Press firmly on the insertion tool with the other hand to insert the dowel pin into the reference hole.



Fig. 55: Inserting the dowel pin

5. Insert the second dowel pin into the other reference hole.



Fig. 56: Inserted dowel pin

- The dowel pins have been inserted.



If the dowel pins protrude too far from the material, you have to adjust the milling depth and drill the reference holes again.

■ Inserting a tool into the collet

Systems without tool magazine require that the tools are inserted manually according to the project requirements. The processing head has to be moved to the **Zero position** for a tool change.

1. Click on *Tool magazine*.



Fig. 57: Icon tool magazine

- The following dialog is displayed:

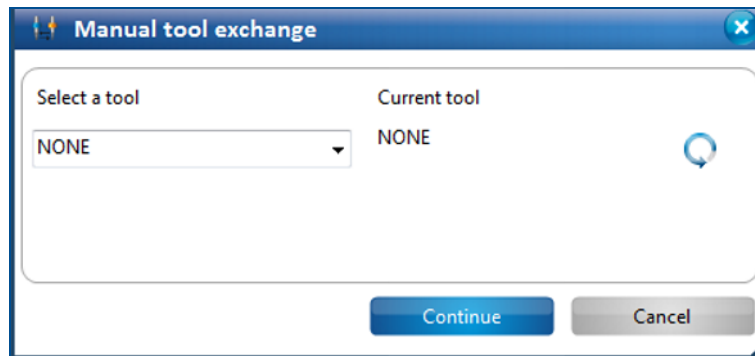


Fig. 58: Manual tool exchange

2. In the drop-down list select the tool that you want to use.
3. Click on [Continue].

- The following dialog is displayed:



Fig. 59: Tool Exchange

4. Insert the tool that you want to use into the provided insertion tool (2).

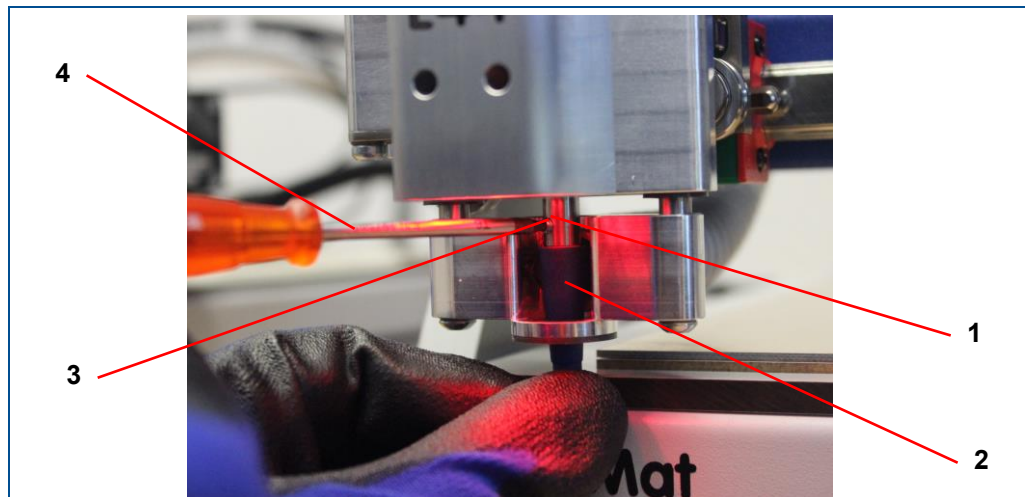


Fig. 60: Inserting a tool

1 Collet

2 Insertion tool

3 Locking screw

4 Screwdriver

5. Use the provided screwdriver to loosen the locking screw (3).
 6. Insert the insertion tool (2) with the inserted tool into the collet (1).
 7. Tighten the locking screw.
 8. Click on [OK].
- The tool has been inserted into the collet.

7 Maintenance

This chapter contains important information about maintenance of the system.


Proper maintenance and the proper operation of the corresponding supply units – in this case the extraction system – are basic requirements for a smooth function of the system.

Maintenance has to be performed and documented regularly according to the manufacturer's instructions.

The system is designed for a service life of 10 years used in one-shift operation (10 hours a day). The specified maintenance intervals are valid for one-shift operation at 5 days a week.

7.1 Safety

Follow the safety instructions below for your own protection and for the protection of other persons in the vicinity of the maintenance work. The maintenance personnel must ensure that the described prerequisites for the planned maintenance tasks are fulfilled and they must observe the special warning messages for the individual maintenance tasks.

 DANGER	
<p>Danger to life by electrical shock!</p> <p>Touching energized parts causes a direct danger to life by electrical shock. Damage to the insulation or damaged individual parts can be dangerous to life.</p> <ul style="list-style-type: none"> ▶ All work on energized components of the system must be performed by a qualified electrician. ▶ If the insulation is damaged, switch off the power supply immediately and initiate the repair. ▶ De-energize all energized components of the system or equipment, before working with them. Ensure that the system or equipment is de-energized for the whole time of the task. ▶ Never bridge or deactivate fuses. ▶ Always keep moisture away from energized parts because it can cause a short circuit. 	

7.2 Maintenance schedule

The following tables provide an overview of the maintenance tasks that have to be performed by properly trained personnel.

Component/Assembly	Interval	Task to be performed	Remark
Circuit board plotter	Before each startup	Visual check	See page 68
Circuit board plotter	Regularly	Cleaning	See page 68
Collet	After 100 operating hours	Cleaning	See page 68
Extraction system	When the extraction power weakens noticeably.	Replacing the HEPA filter	See user manual of the extraction system

Table 6: Maintenance schedule for the maintenance personnel of the operator

7.3 Maintenance tasks for the maintenance personnel of the operator

This chapter contains a detailed description of the individual maintenance tasks that may only be performed by the maintenance personnel of the operator. For information on maintenance tasks of the extraction system refer to the manufacturer's user manual.

■ Performing a visual check

1. Check the mains cable (of the circuit board plotter), the USB cable (to the PC), the D-Sub cable of the extraction system, and the extraction hose for visible damage.
2. Replace damaged cables and hoses immediately.
3. Check the processing head and the processing table for visible damage. If you find damage:
 - Ensure that the system cannot be used.
 - Contact the LPKF Service.

The visual check is concluded.

■ Cleaning the system

1. Disconnect the mains plug from the wall socket.
2. Remove material residues from the processing table using a soft brush and a dry antistatic cloth.
3. Connect the mains plug to the wall socket.

The system has been cleaned.



In case of stubborn dirt and stains, a slightly damp cloth can be used.

■ Cleaning the collet

1. Move the processing head to the zero position.
2. Apply the insertion tool to the tool.



Fig. 61: Insertion tool

3. Use the provided screwdriver to loosen the locking screw.



Fig. 62: Loosening the locking screw

4. Remove the tool from the collet.

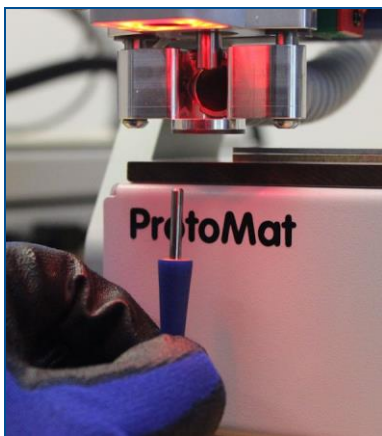


Fig. 63: Removing the tool

5. Use the collet brush to clean the insides of the collet.



Fig. 64: Cleaning the collet

6. Use the insertion tool to insert the tool into the collet.
7. Tighten the locking screw.

The collet has been cleaned

8 Troubleshooting

This chapter contains an overview of possible faults and measures for troubleshooting.

If faults occur that cannot be eliminated by the following messages contact the LPKF Service.

8.1 Fault display

The system's operation LED indicates occurring faults. In the software, faults are indicated via the panes *Fault monitor* and *Messages*.

Fault monitor pane

The *Fault monitor* pane contains a list of all system messages. These can refer, for example, to a problem at the start of the system or to error messages during production of the part.

► Click on *View > Fault monitor* to open the *Fault monitor* pane:

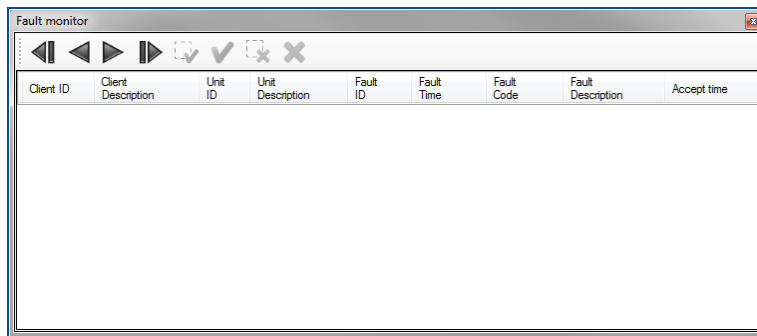


Fig. 65: *Fault monitor* pane

Column	Description
Client ID	ID of the system component that reported the error.
Client Description	Description of the system component that reported the error.
Unit ID	ID of the component in the system where the error occurred.
Unit Description	Part of the component where the error occurred.
Fault ID	Error ID
Fault Time	Displays the time and date when the error occurred.
Fault Code	Error code
Fault Description	Detailed description of the error that occurred.
Accept time	Time when the error was acknowledged.

Table 7: *Fault monitor*

Icon	Name	Description
	First	Jumps to the beginning of the list.
	Previous	Jumps up one row in the list.
	Next	Jumps down one row in the list.
	Last	Jumps to the end of the list.
	Accept	Acknowledges the selected error in the list.
	Accept All	All errors not yet acknowledged are acknowledged automatically.
	Clear	The selected error that has already been acknowledged is deleted from the list.
	Clear All	All errors already acknowledged are deleted from the list.

Table 8: Fault monitor icons

Pane Messages

The pane *Messages* displays the following information:

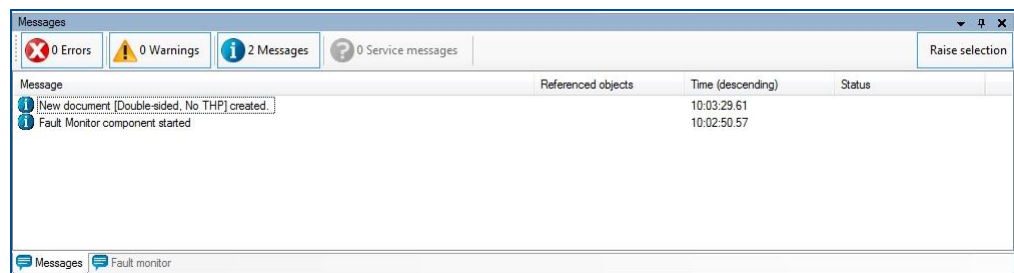


Fig. 66: Pane Messages

Type	Description
Error	Errors are critical program errors. The Errors can be displayed or hidden by clicking on [Errors].
Warnings	Warnings are due to input errors that the user has caused. For example, these can be information on aborted or improperly executed actions. The warnings can be displayed or hidden by clicking on [Warnings].

Type	Description
Messages	Messages present statistical information of the program. These can be feedback of CircuitPro PM on certain actions that have been executed, e.g.: "New document ... created". The messages can be displayed or hidden by clicking on [Messages].
Service messages	Service messages are displayed when maintenance of the system is due. Contact the LPKF Service. The service messages can be displayed or hidden by clicking on [Service].
Raise selection	Highlights the selected action in the CAM view. Example: You draw a rectangle. The Message pane displays a corresponding message (e.g. Rectangle Drawn_5 has been created). If you activate [Raise selection] and click on the message, the rectangle is highlighted in the CAM view.

Table 9: Pane Messages

8.2 Actions in case of an error

■ Clearing faults

1. Read the error description in the fault monitor.
 2. Remedy the fault.
 3. For a new initialization, acknowledge the fault if necessary.
- The fault has been cleared.



If the faults still exist after initialization, restart the system software. If you have any questions contact the LPKF Service.

8.3 Fault table

The following table contains possible faults and proposals how to clear them.

Description	Component	Possible cause	Remedial measures
No connection between system and PC	System	Missing power supply	Check the mains cable and plug the mains plug back into the wall socket. Click on <i>Machining > Connect</i> .
		System switched off	Switch the main switch at the system to the ON position. Click on <i>Machining > Connect</i> .
		No data transfer via the USB cable	Check the USB cable connection between the system and the PC for damage or loose connectors.

Description	Component	Possible cause	Remedial measures
			<p>Replace the USB cable if damaged. Click on <i>Machining > Connect</i>. Follow the instructions on page 45.</p> <p>Check the USB settings of the operating system. Click on <i>Machining > Connect</i>. Follow the instructions on page 45.</p>
No extraction	Extraction system	Missing power supply	Check the mains cable and plug the mains plug back into the wall socket.
		Extraction system switched off	Set the mode selector switch to the position ON or AUTOMATIC.
		Circuit breaker triggered	Reset the extraction system.
		No data transfer	Check the cable connection between the circuit board plotter and the extraction system for damage or loose connectors. Replace the cable if damaged.
Tool jammed	Collet	Tool has not been inserted correctly into the collet	Insert the tool into the collet up to the stop with the tip facing down.
		Collet clogged with dirt	Clean the collet. Follow the instructions on page 68.

Table 10: Fault table

9 Disassembly and disposal

This chapter describes the disassembly and the disposal of the system.

The following tasks may only be performed by the **maintenance personnel of the operator**.

9.1 Safety

NOTICE

Environmental hazard by improper disposal of the system!

Improper disposal of the system can cause hazards to the environment.

- ▶ Dispose of the system properly or contact the LPKF Service.

9.2 Preparations

Before disassembling the system:

- Switch off the system.
- Disconnect all external components and de-energize the residual energy.
- Remove all operating materials, auxiliary materials, and consumables and dispose them of in an ecological way.

9.3 Uninstalling the system

The system is disassembled as follows:

■ Uninstalling the system

1. Disconnect the mains plug from the wall socket.
 2. Disconnect the hose of the extraction system.
 3. Disconnect the control cable of the extraction system.
 4. Disconnect the USB cable connecting with the PC.
 5. Disconnect power supply cable.
 6. Install the foam pad as a transport lock beneath the processing head.
- The system has been uninstalled.



The PC and the extraction system can now be used for other purposes or can be stored as well. For information on uninstalling these systems refer to the corresponding user manuals.

9.4 Disposing of the system

LPKF AG will accept a delivered product for which a manufacturer's obligation to take back is based on the Waste Electrical and Electronic Equipment directive and will dispose of it according to regulations. Contact the LPKF Service for more information on returning the system. The contact data are listed in the information on customer service.

The LPKF Service provides a return goods authorization number if you want to return the system.

10 Appendix

This chapter contains navigation elements of the document.

10.1 List of figures

Fig. 1:	Type label	22
Fig. 2:	System overview	23
Fig. 3:	Processing head.....	24
Fig. 4:	Processing table.....	24
Fig. 5:	Vision system	25
Fig. 6:	Connections.....	26
Fig. 7:	Displays and control elements	28
Fig. 8:	Equipment configuration wizard	29
Fig. 9:	Minimum required space	35
Fig. 10:	Workplace of the operating personnel	36
Fig. 11:	Connecting the system.....	37
Fig. 12:	Connecting the extraction system	38
Fig. 13:	D-sub connector of the ProtoMat E34/E44	38
Fig. 14:	D-sub connector of the extraction system.....	38
Fig. 15:	USB socket.....	39
Fig. 16:	Power supply socket	39
Fig. 17:	Pulling the processing head to the front.....	40
Fig. 18:	Plugging the insertion tool onto the dummy tool	40
Fig. 19:	Loosening the locking screw	41
Fig. 20:	Extracting the dummy tool.....	41
Fig. 21:	Dummy tool	41
Fig. 22:	Dialog <i>New document</i>	44
Fig. 23:	User interface CircuitPro PM.....	45
Fig. 24:	Selecting the machine type	45
Fig. 25:	Connection steps.....	46
Fig. 26:	Importing the data.....	47
Fig. 27:	CAM view with opened project	47
Fig. 28:	Create fiducial.....	48
Fig. 29:	Four fiducials	48
Fig. 30:	Technology Dialog.....	49
Fig. 31:	Computation results	50
Fig. 32:	Create rectangle to create a rubout area	51
Fig. 33:	Rectangle surrounding the IC pads.....	51
Fig. 34:	Processing table.....	53
Fig. 35:	Processing table with drilling underlay plate	53
Fig. 36:	Fastening the material.....	54
Fig. 37:	Operate.....	54
Fig. 38:	Material settings	55
Fig. 39:	Defining the right rear corner.....	55
Fig. 40:	Defining the front left corner	56
Fig. 41:	Placement.....	56
Fig. 42:	Alignment.....	58
Fig. 43:	Micrometer screw at the processing head	60
Fig. 44:	Optimum milling depth.....	60
Fig. 45:	Inserting a screwdriver	61
Fig. 46:	Removing the reference-hole strip	61
Fig. 47:	Reference-hole strip	61
Fig. 48:	Inserting the reference-hole strip.....	62
Fig. 49:	Dialog <i>Drill reference holes</i>	62
Fig. 50:	Reference-hole drill	62
Fig. 51:	Prompt for cleaning the tool	63

Fig. 52: Cleaning the tool.....	63
Fig. 53: Dowel pin and insertion tool	63
Fig. 54: Inserting the dowel pin	64
Fig. 55: Inserting the dowel pin	64
Fig. 56: Inserted dowel pin	64
Fig. 57: Icon tool magazine	65
Fig. 58: Manual tool exchange	65
Fig. 59: Tool Exchange.....	65
Fig. 60: Inserting a tool.....	66
Fig. 61: Insertion tool.....	68
Fig. 62: Loosening the locking screw	69
Fig. 63: Removing the tool	69
Fig. 64: Cleaning the collet.....	69
Fig. 65: <i>Fault monitor</i> pane	70
Fig. 66: <i>Pane Messages</i>	71
Fig. 67: Declaration of conformity.....	78

10.2 List of tables

Table 1: Accessories kit E34/E44.....	21
Table 2: Extraction system	25
Table 3: Pin assignment D-sub 25-pin	27
Table 4: Displays and control elements	28
Table 5: Climatic conditions.....	34
Table 6: Maintenance schedule for the maintenance personnel of the operator	67
Table 7: Fault monitor.....	70
Table 8: Fault monitor icons	71
Table 9: <i>Pane Messages</i>	72
Table 10: Fault table.....	73

10.3 EC Declaration of conformity

LPKF
Laser & Electronics

EC Declaration of conformity according to machinery directive 2006/42/EC Annex II A

The manufacturer/distributor

LPKF Laser & Electronics AG
Osteriede 7
D-30827 Garbsen

hereby declares that the following product

Product designation: LPKF ProtoMatE34, LPKF ProtoMat E44
Product type: Circuit board plotter

conforms to the requirements of the directive stated above - including the amendments in force at the time of the declaration.

This declaration is only valid for the state of the product at the time of delivery. Any parts added by the user or other later modifications are excluded. The declaration becomes invalid if the product is modified after delivery.

The following national or international standards (or parts/clauses) and specifications were applied:

EN ISO 12100-1:2011	Safety of machinery - Basic concepts, general principles for design, risk assessment
DIN EN 60204-1:2014	Safety of machinery - Electrical equipment of machines Part 1: General requirements.
DIN EN 626-1:2008	Safety of machinery - Reduction of risks to health from hazardous substances emitted by machinery - Part 1: Principles and specifications for machinery manufacturers

We operate a quality assurance system according to DIN EN ISO 9001 that is certified by DeuZert
Certificate number: A 40583 22 00 1
Name of the documentation representative: Rainer Aschenbeck
Address of the documentation representative: see address of manufacturer

The following additional EC directives were applied:

- EMC directive 2014/30/EU
- Low voltage directive 2014/35/EU

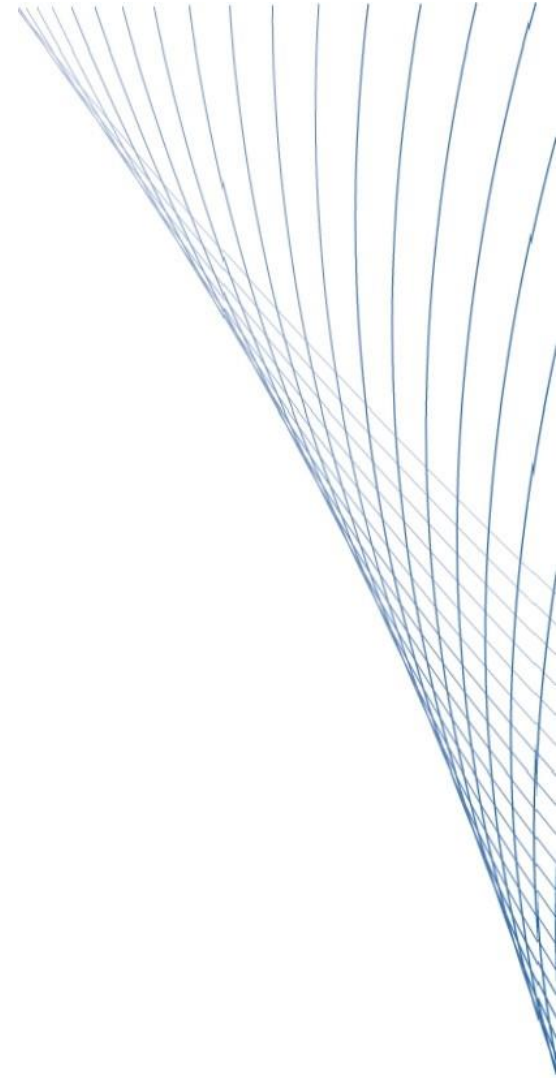
Location: Garbsen (Germany)
Date: 01.03.2016

B. Lange

Dipl.- Ing. Bernd Lange (CTO)

CE

Fig. 67: Declaration of conformity



LPKF Laser & Electronics AG
Osteriede 7
30827 Garbsen
Deutschland

Telefon +49 5131 7095-0
Telefax +49 5131 7095-90

www.lpkf.com